



cMT Quick Start Guide

Your Industrial Control Solutions Source

www.maplesystems.com



For use with the following:

- cMT-SVR
- cMT-D090

Table of Contents

COPYRIGHT NOTICE	4
WARRANTY	4
TECHNICAL SUPPORT	4
Introduction	5
The cMT-SVR	5
The cMT-D090	5
How It Works	5
The cMT-D090 Stand	6
Connecting the cMT-D090 to the cMT-SVR	6
Configure the cMT-SVR	7
Network Configuration	8
Date/Time Configuration	9
HMI Identification	10
Historical Data Files	11
Email Configuration	12
Project Management	13
System Password	14
Enhanced Security	15
EasyAccess 2.0	16
Logout	16
Create the cMT-SVR Project	17
cMT-SVR Application	18
Network Connection	18
Data Collection	18
cMT Viewer	20
Using the cMT Viewer on an cMT-D090, iPad, and Tablets	20
Configure cMT Viewer on the cMT-D090	21
Settings Menu	22
Connect Menu	24
Search menu	24

History menu..... 25

Return to main screen (Project Screen)..... 26

Using the cMT Viewer on a Windows PC..... 28

Settings Menu 29

Update cMT-D090 OS and/or Firmware 34

COPYRIGHT NOTICE

This manual is a publication of Maple Systems, Inc., and is provided for use by its customers only. The contents of the manual are copyrighted by Maple Systems, Inc.; reproduction in whole or in part, for use other than in support of Maple Systems equipment, is prohibited without the specific written permission of Maple Systems.

The copyright of EZwarePlus and its related software belongs to Weintek Labs, Inc.

WARRANTY

Warranty Statements are included with each unit at the time of purchase and is available at www.MapleSystems.com.

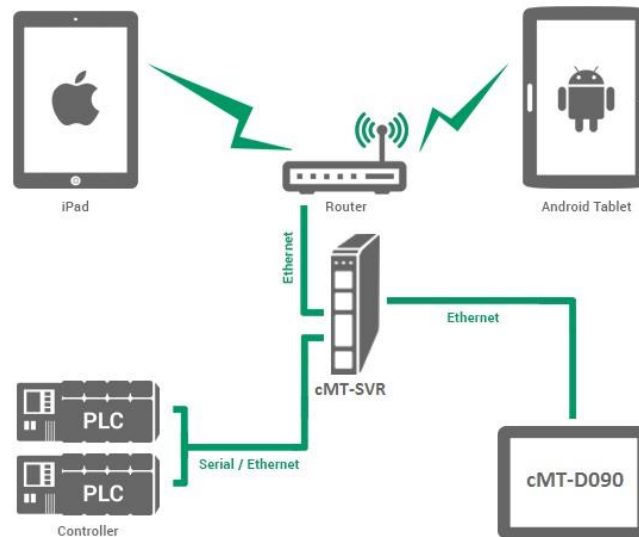
TECHNICAL SUPPORT

This manual is designed to provide the necessary information to get started with the cMT-SVR and cMT-D090. However, if you need assistance, please contact Maple Systems:

- Phone: 425-745-3229
- Email: support@maplesystems.com
- Web: <http://www.maplesystems.com>

Introduction

The cMT-SVR is a programmable operator interface that can be accessed on the Local Area Network (LAN) via Wi-Fi and Ethernet devices. Wi-Fi connectivity is accomplished through a standard, user-provided wireless router.



The cMT-SVR

The cMT-SVR is a human-machine interface (HMI) without built-in display. The cMT-SVR is configured with EZwarePlus (5.01.02 or later) and contains screens and related logic. However, the display is viewed externally over the LAN. This can be done using an Ethernet connection to a PC or a cMT-D090 display, or a Wi-Fi connection with an Apple iPad or Android device. The iPad must have iOS v6.0 or later, and Android devices must be v4.1 or later.

The cMT-D090

The cMT-D090 is a 9.7" touchscreen display designed specifically for use with the cMT-SVR. It has the same look and feel as the iPad or Android device with a capacitive touchscreen that supports swipe, pinch, and zoom functionality. The cMT-D090 is used as a local touchscreen with an Ethernet cable connected directly to the cMT-SVR.

How It Works

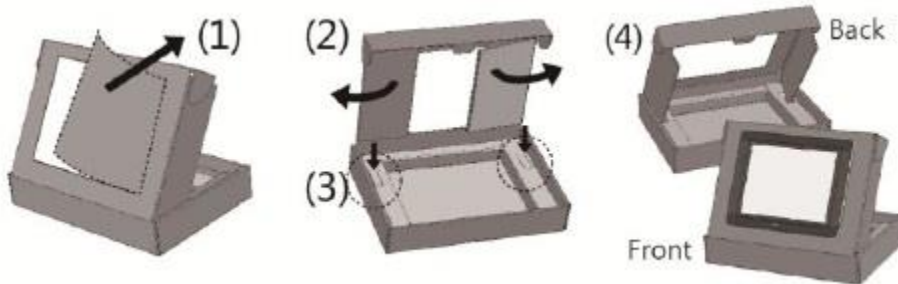
When a display device (cMT-D090, iPad, Android tablet, PC) connects to the cMT-SVR, the interface application is transferred to and stored in the display device. Since the project itself resides in the display device, only live data is exchanged between the cMT-SVR and the display device. This results in very fast updates on the display device.

A cMT-SVR can host up to 3 display devices simultaneously. A display device can rapidly switch between up to 3 cMT-SVR units.

The cMT-D090 Stand

The packing box for the cMT-D090 can be transformed into a stand for mounting the cMT-D090. Follow these steps to assemble the stand.

1. Remove the center of the box cover along the perforated line.
2. Pull the two inner flaps toward the sides as shown in the illustration below.
3. Press down along the perforated line inside the box.
4. Complete the stand as shown.



Connecting the cMT-D090 to the cMT-SVR

The cMT-D090 is initially configured to “Obtain an IP address automatically.” In order for it to connect to a cMT-SVR directly, you must go into the Settings window on the cMT-D090 and configure it for a static IP address.

1. Apply +24VDC to the cMT-SVR and cMT-D090 to turn them ON (see the cMT-SVR and cMT-D090 Installation Guides for connecting power). The cMT Viewer will appear on the cMT-D090 screen.
2. Connect the Ethernet port on the cMT-D090 to the “Ethernet 2” port on the cMT-SVR with an Ethernet cable. The Ethernet 2 port on the cMT-SVR has a default static IP address of 192.168.100.1.
3. Touch the “gear” icon to open the *Settings* window of the cMT-D090.
4. Touch the “closed lock” icon, and enter the default password (111111) at the prompt.
5. Touch the “Network” tab on the left side of the *Settings* window.
The IP address field will be greyed out. Turn OFF the “Obtain an IP address automatically” switch. Enter a static IP address for the cMT-D090 so that it is on the same subnet as the cMT-SVR, such as 192.168.100.90, then press the ENTER key.
6. Enter 255.255.255.0 for the subnet mask, then press the ENTER key.
7. Touch the orange “Close” icon at the top right corner of the screen to exit the *Settings* menu.
8. Tap the orange “Plus” icon to open the *Connect* menu.
9. Touch the “Search” tab. A list of each cMT-SVR residing on the subnet is shown below.
10. Select the cMT-SVR you wish to connect to, and then touch the “Go” button (blue “Plus” icon).
11. The “Please enter user password” window pops up. Enter the default password (111111) and touch “OK.” The cMT-D090 will download the project from the cMT-SVR and start running the project when completed.

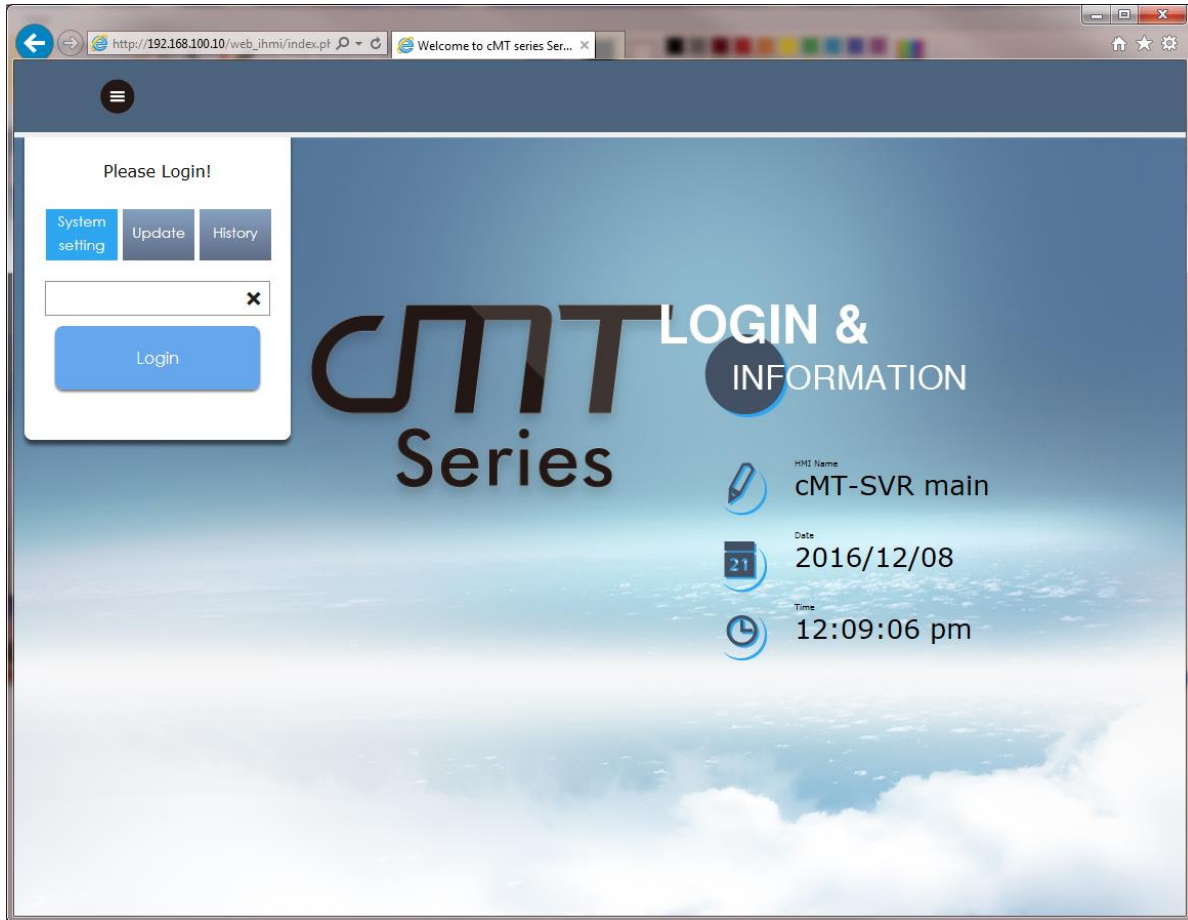
Configure the cMT-SVR

The cMT-SVR has a web server that displays a configuration page. When shipped, the cMT-SVR has the following Ethernet Port settings:

<u>Ethernet1</u>	<u>Ethernet2</u>
DHCP	IP: 192.168.100.1
	Subnet Mask: 255.255.255.0

Note: If the IP settings are unknown, turn DIP switch 1 ON and switch 2 OFF and cycle power on the cMT-SVR. This will reset the IP settings to default. Be sure to turn switch 1 off after restoring power.

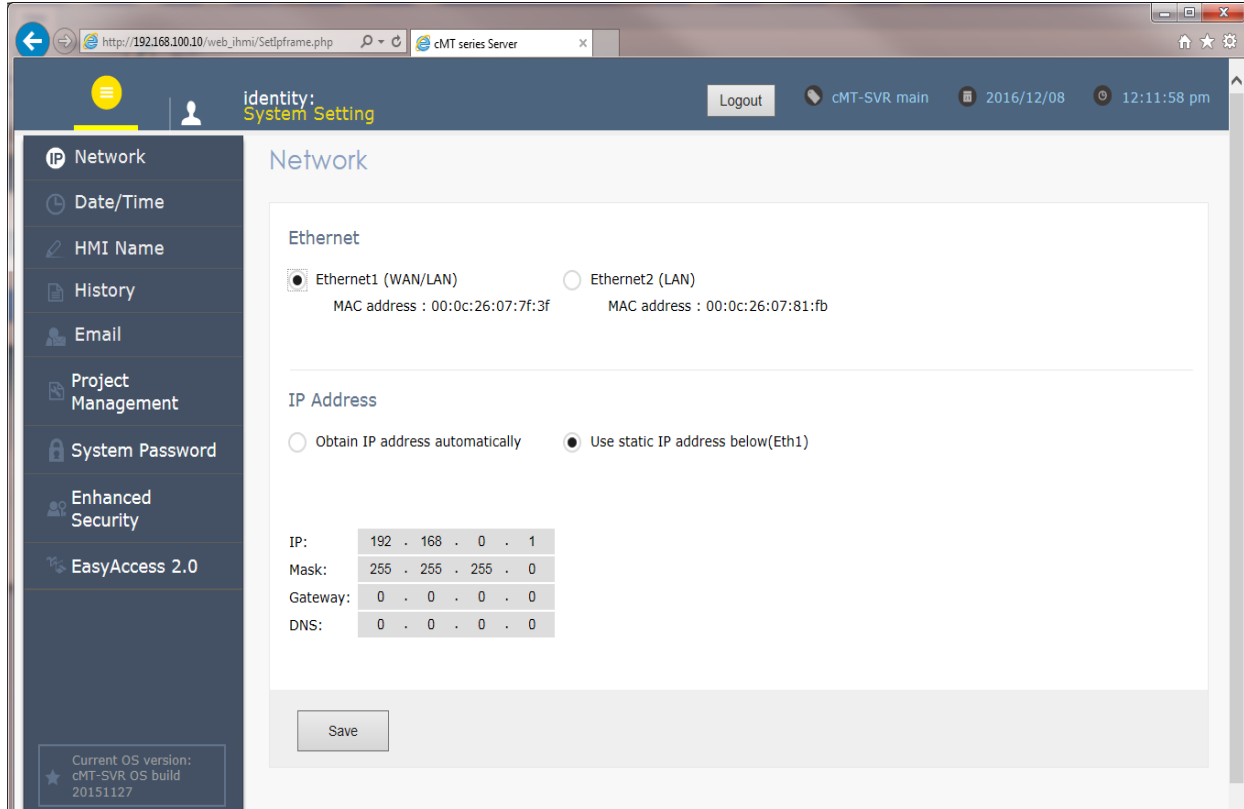
To configure the cMT-SVR, set a web browser to the cMT-SVR's IP address. The default Log In page is shown:



Log in using the box in the upper left corner. Select “System setting” and then enter the password. The default password is *111111*.

Network Configuration

After logging in, the Network dialog will be displayed. Ethernet 1 is a WAN port, and Ethernet 2 is a LAN port. Ethernet 1 and Ethernet 2 must be on different subnets. The settings for ports Ethernet 1 and Ethernet 2 are individually shown, including the MAC addresses. The default settings are shown here.



Ethernet 1 is a WAN port. Select *Obtain IP Address Automatically* to configure the port for DHCP; or specify the IP Address, Subnet Mask, and Gateway and DNS addresses.

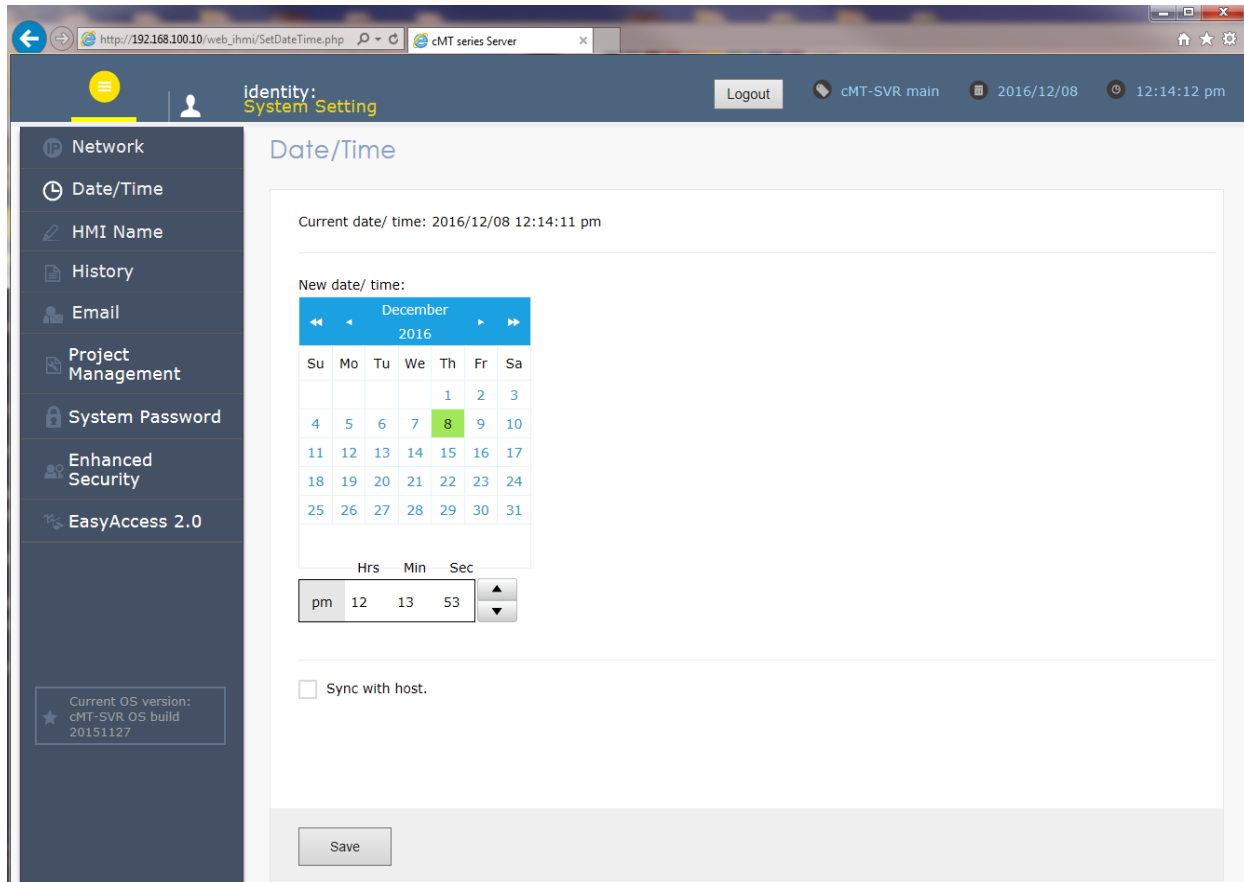
Click the *Save* button to save changes to the IP settings.



Ethernet 2 is a LAN port. Select *Obtain IP Address Automatically* to configure the port for DHCP; or specify the IP Address and Subnet Mask.

Date/Time Configuration

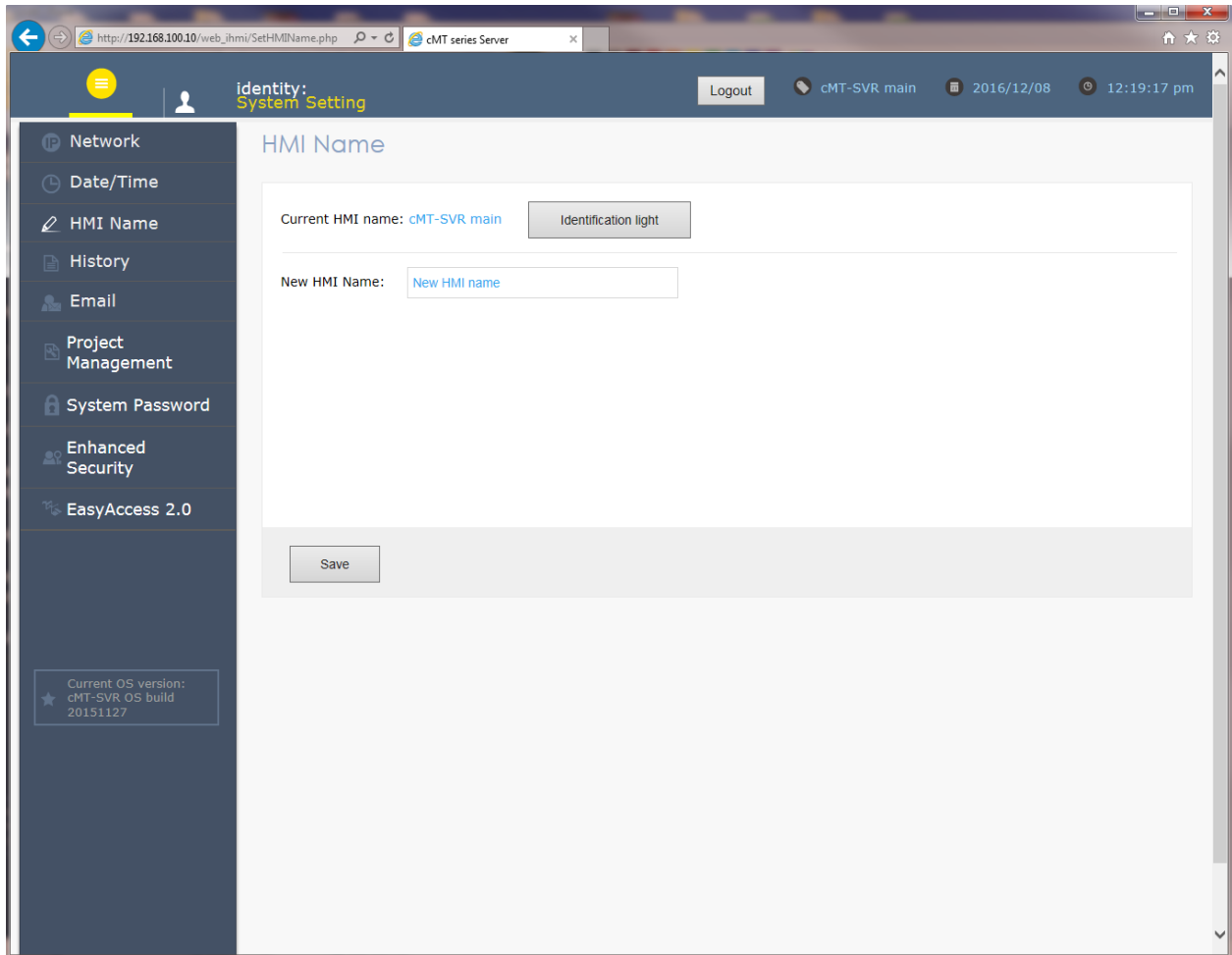
The Date/Time page allows setting of the local date and time on the cMT-SVR.



Set the date and time from the calendar and clock objects. Or, check the *Sync with host* box to set the cMT-SVR to the same date and time as the PC. Click the *Save* button to write the data to the cMT-SVR.

HMI Identification

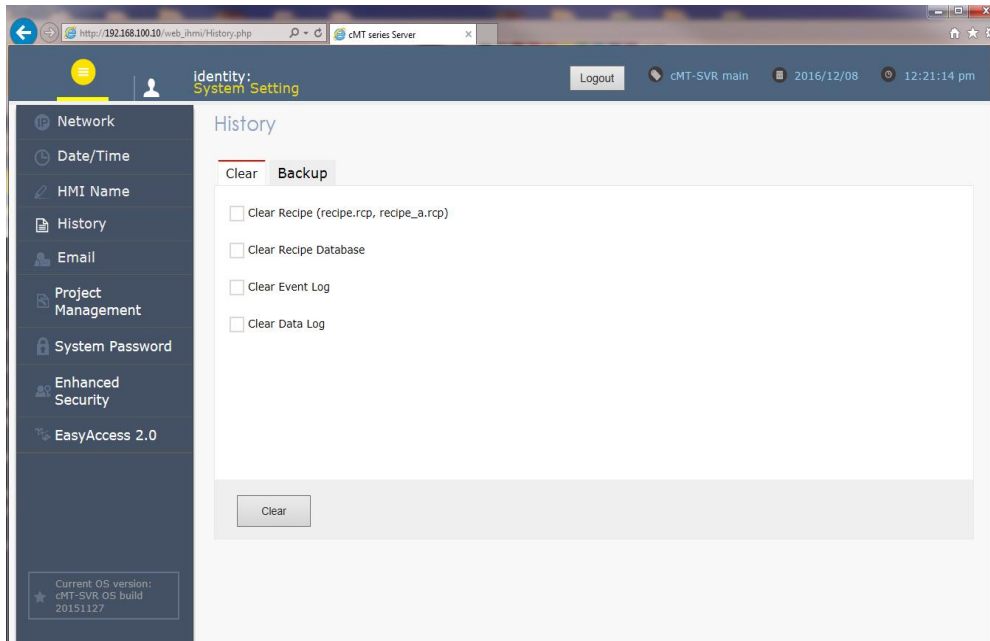
The HMI Name page identifies the cMT-SVR.



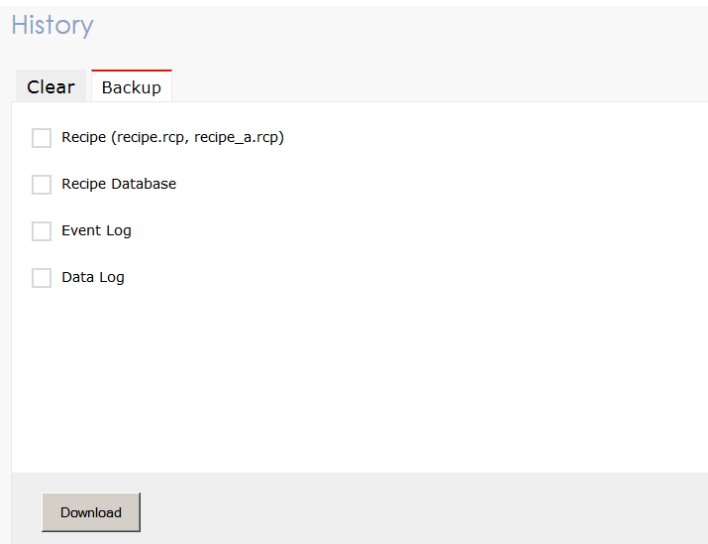
Click the *Identification light* button to identify the unit currently connected. The cMT-SVR will flash the green (center) LED at the top of the unit. A unique name can be assigned to the cMT-SVR. This name will be available in the EZwarePlus software to provide another method (in addition to the IP address) for identifying which unit is being configured. Click the *Save* button to write the name to the cMT-SVR.

Historical Data Files

The History page allows the clearing and retrieving of historical data stored on the cMT-SVR.



On the **Clear** tab, check the boxes for the history files to be deleted. Then click the *Clear* button to delete the data.

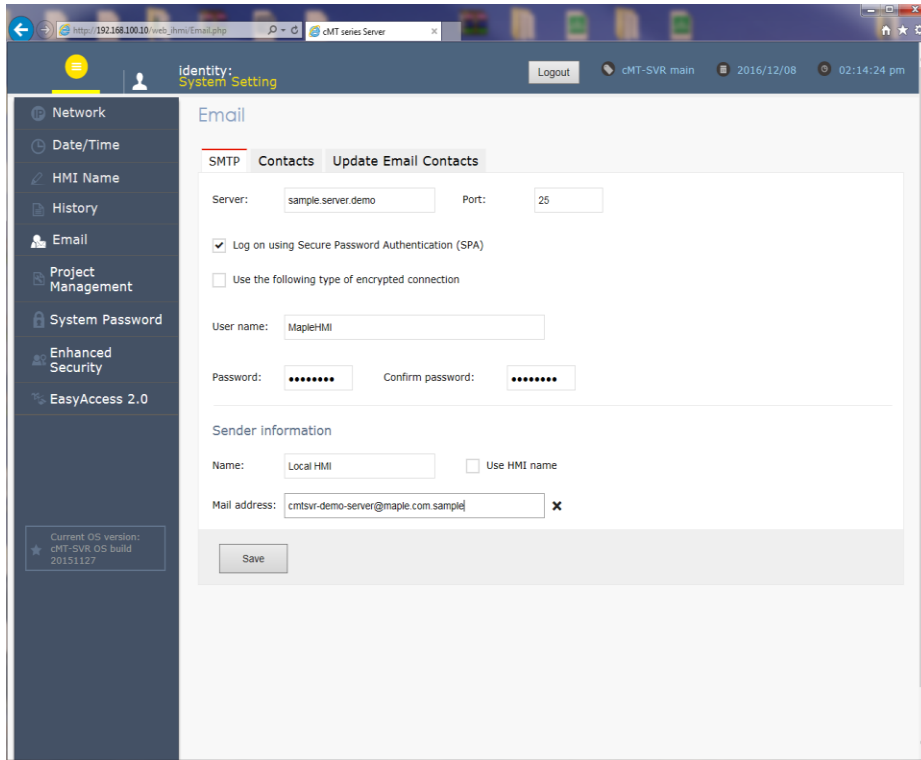


On the **Backup** tab, check the boxes for the data to be retrieved from the cMT-SVR. Then click the *Download* button.

Note: The History files are compressed in a *.tar.gz file format. Use WINRAR to extract the files.

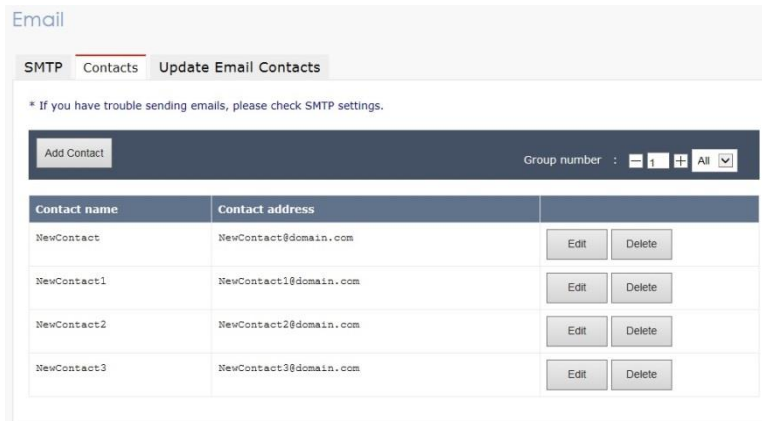
Email Configuration

The Email page configures email servers and recipients. If email settings have been configured in the project in the cMT-SVR, those settings will be displayed.

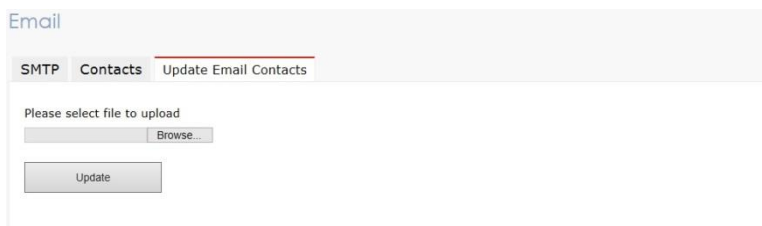


Configure the SMTP settings as required for the email server. Due to the variability of email settings, Maple Systems is unable to provide specific data on these settings.

Configure the *Sender Information* so that the recipient sees who the email is from. Click *Save* after making any changes.

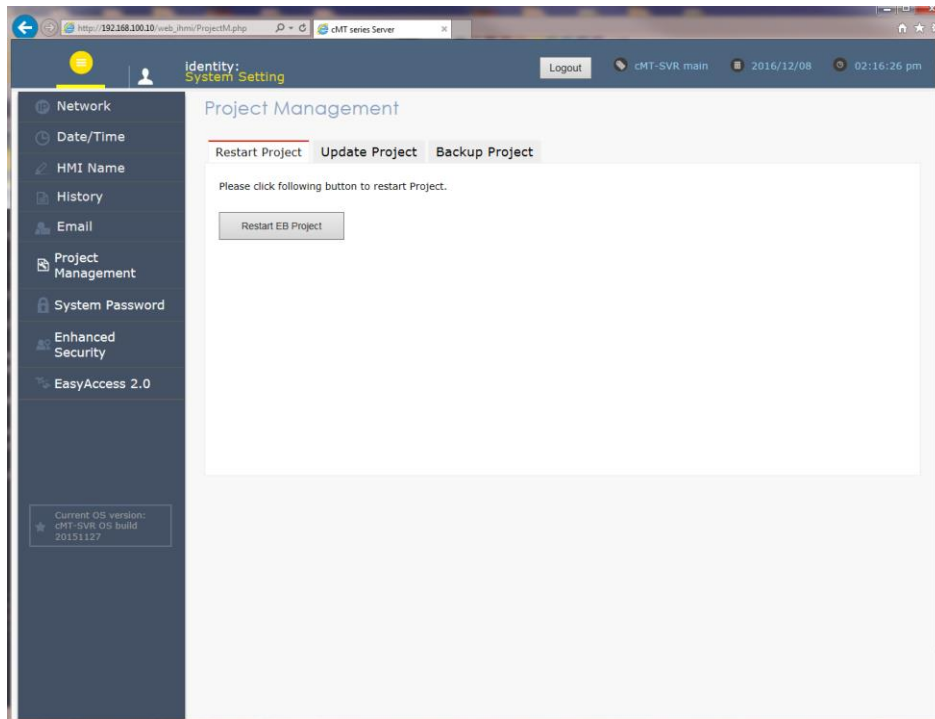


On the **Contacts** tab, add new contacts or edit/delete existing ones. Click *Save* after making any changes.



On the **Update Email Contacts** tab, update the email contact list from “e-Mail Contacts” data stored using the Administrator Tools. Please refer to the Administrator Tools help file or the “EZwarePlus Programming Manual” for more information.

Project Management

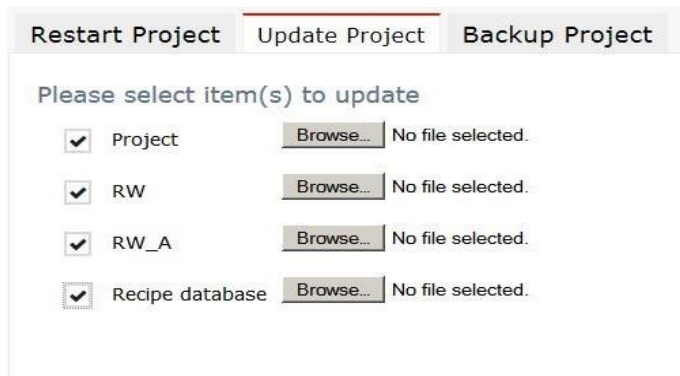


Click the *Restart EB Project* button to stop and restart the application.

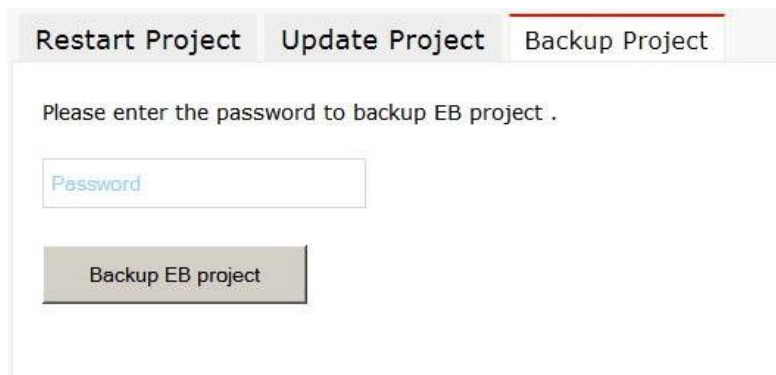
The **Update Project** tab allows project and data files to be transferred from the PC to the cMT-SVR.

The **Backup Project** tab allows the project in the cMT-SVR to be transferred from the cMT-SVR to the PC.

The Project Management page allows the application in the cMT-SVR to be restarted, updated from the PC, or backed up to the PC.

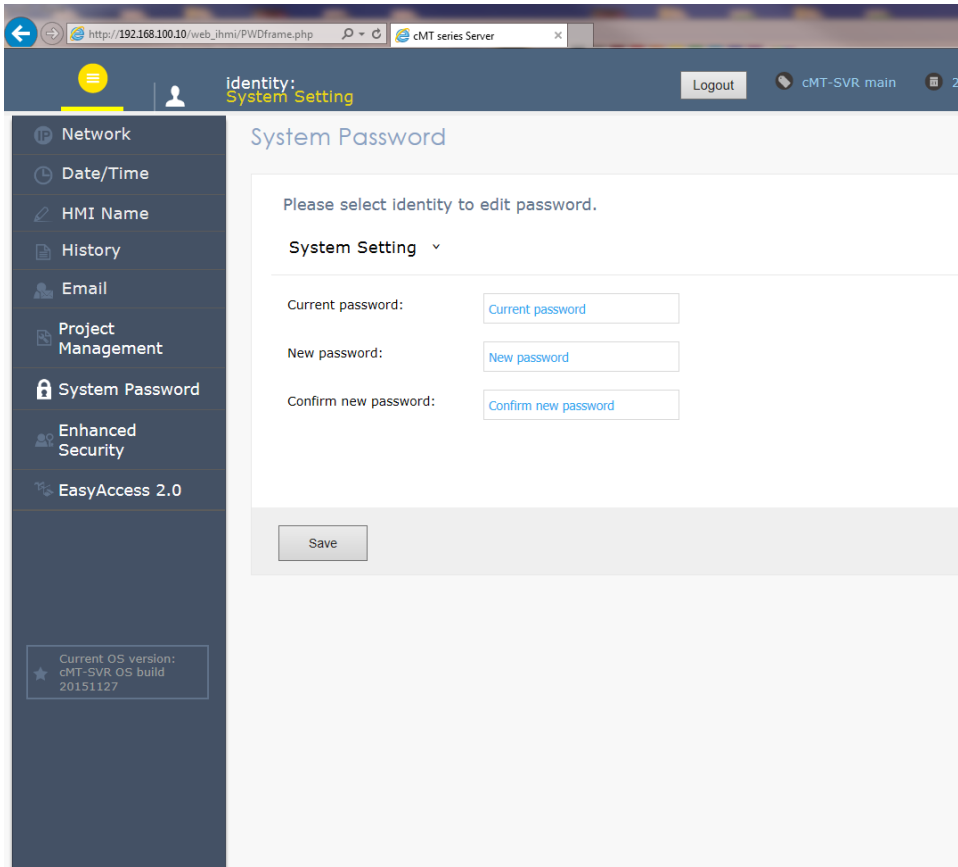


Select the data files to transfer to the cMT-SVR and click the *Upload* button. Project files have the file extension *cxob*, RW/RW_A files have the extension *rcp*, and recipe database files have the extension *db*.



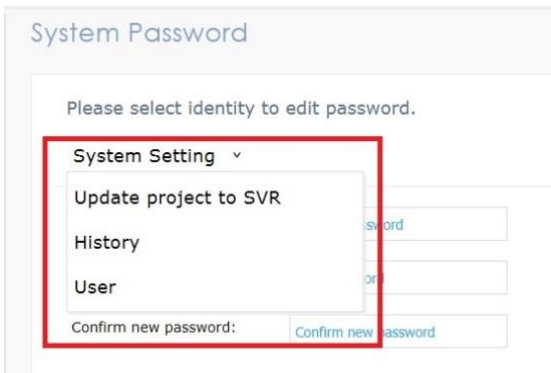
Enter the **System** password, and click the *Backup EB Project* button. The project in the cMT-SVR will be transferred to the PC.

System Password



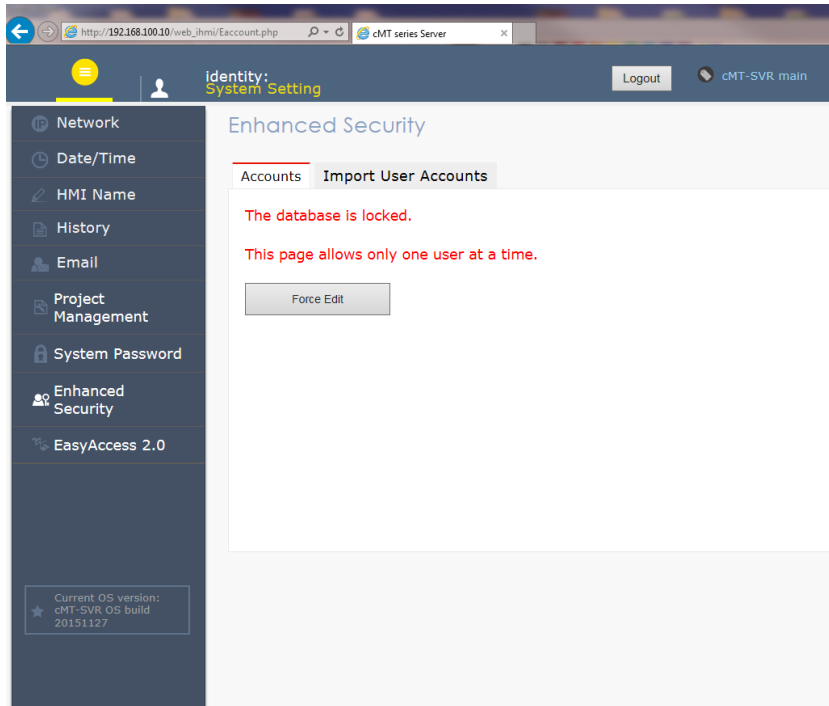
The current password is required to change a password. Enter the current password then the new password. Click the *Save* button to write the new password to the cMT-SVR.

There are four passwords that can be set from this page. Click on *System Setting* to select one of the other three options:

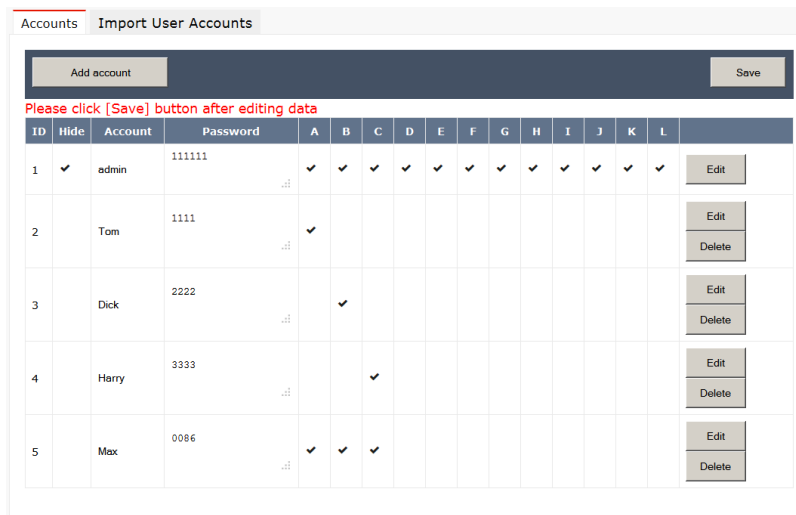


- | | |
|-----------------------|---|
| System Setting | Required to log in to the cMT-SVR |
| Update Project to SVR | Required for writing a project to the cMT-SVR |
| History | Required for retrieving Historical Data Files |
| User | Required for logging into EasyAccess |

Enhanced Security



If the security database is being used by the application, this screen will be displayed. Click the *Force Edit* button to change the user security settings.

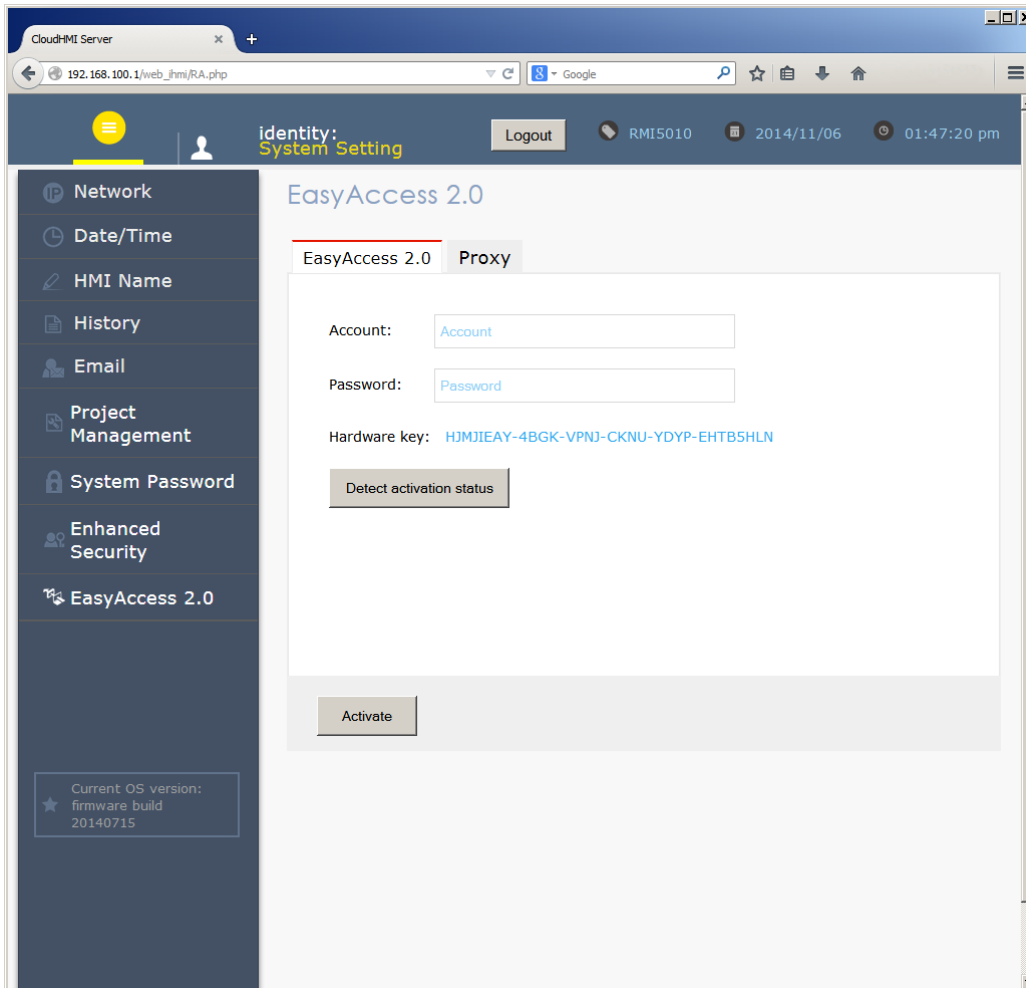


Each account can be edited or deleted, and new accounts can be added. Please refer to the security article in the EZwarePlus help file or the EZwarePlus Programming Manual for more information.



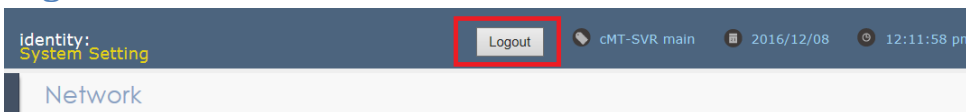
User Account files can be created with the Administrator Tools application. Please refer to the Administrator Tools help file or the “EZwarePlus Programming Manual” for more information.

EasyAccess 2.0



EasyAccess 2.0 is a secure method of remote monitoring to the cMT-SVR from anywhere in the world. For specific information on implementing EasyAccess 2.0, please see the EasyAccess 2.0 section of the Maple Systems website, or view/download the [EasyAccess 2.0 Manual](#) (P/N 1010-1036).

Logout



Click the Logout button to log out of the web server on the cMT-SVR.

If the Logout button is not visible, click on the “Information” icon in the upper-right corner of the screen. It will display the current project, date, and time, as well as the Logout button.

Create the cMT-SVR Project

The cMT-SVR is configured with EZwarePlus (5.01.02 or newer). Creating the project is similar to other HMI5000 Series products, with a few exceptions:

- VNC is not supported.
- A cMT-SVR project supports up to 24 languages, but a maximum of 8 can be selected to transfer to the cMT-SVR.
- The cMT-SVR does not support printers.
- The cMT-SVR does not support automatic synchronization with a PLC clock. However, clock synchronization can be done with a macro. Additionally, the cMT-SVR can be synchronized with an NTP time server.
- Historical data is collected in a single file instead of daily files.
- The cMT-SVR supports only *Enhanced Security*.
- An existing project can be converted to a cMT-SVR. However, certain objects have different configuration options and should be reviewed after conversion. These objects are: Alarm/Event Log, Backup, Data Sampling, Data Transfer, Function Key, Meter Display, Numeric, PLC Control, Timer, and Trend.
- The cMT-SVR has 2 new Local address types, **PLW** and **PLB**. While connected display devices share the LW and LB addresses, the PLW and PLB address types are unique for each display device. The PLW and PLB addresses reside in the display device, not in the cMT-SVR.

WARNING: An HMI application, Wi-Fi or Ethernet, should *never* allow control of a machine that is not in direct view of the system operator.

Note: *Because wireless networks can be unpredictable, Maple Systems recommends that a cMT-D090 always be used as a local display with a cMT-SVR.*

cMT-SVR Application

A common application for a cMT-SVR is to allow monitoring of an existing network of Maple Systems HMI products and the PLCs to which they are connected.

Network Connection

The cMT-SVR is equipped with 2 separate Ethernet connections. Ethernet 1 is a *WAN* port, and allows connection across a gateway to another network. Ethernet 2 is a *LAN* port and is intended for connecting to devices on the local network. The 2 ports are independent and must be configured to reside on different subnets.

Typically, one port is connected to the network containing the display device(s), and the other port is connected to the network containing the PLCs. Separating the network connections reduces the amount of traffic on both.

Data Collection

cMT-SVR Requesting Register Data from HMI/RMI5001

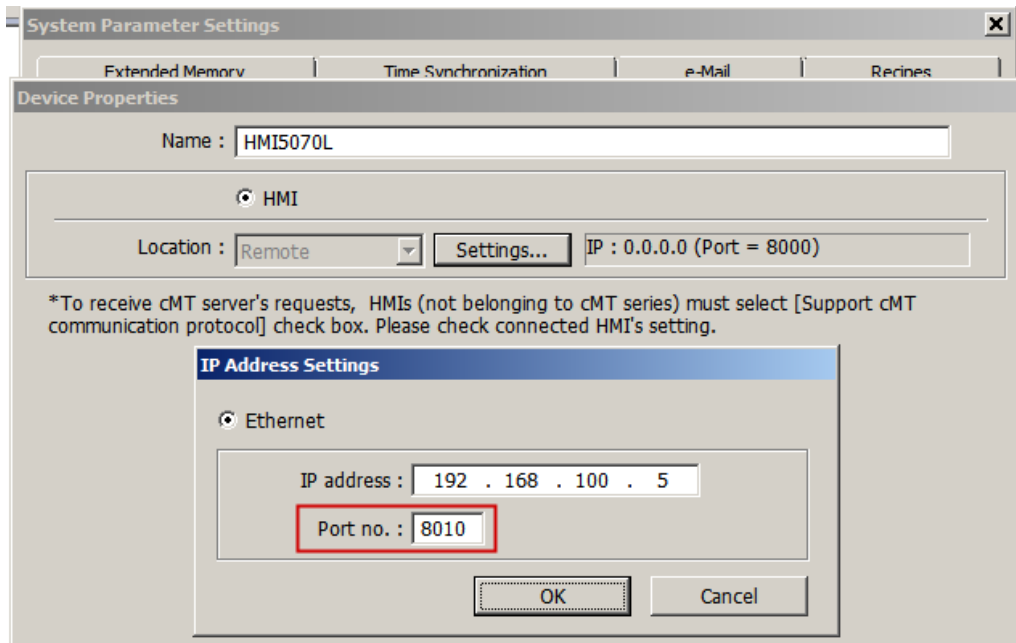
A cMT-SVR can collect register data from other Maple HMIs and the RMI5001 (and their connected PLCs), and store the data in its own local memory. This data can be displayed on the cMT Viewer application. In EZware, each HMI and/or PLC must be added to the cMT-SVR project as a *remote*¹ HMI/PLC. Additionally, in the EZware project for each remote HMI, the *Support cMT communication protocol* option must be selected on the Model tab of the EZware *System Parameters* dialog².

Extended Memory	Printer/Backup Server	Time Synchronization	e-Mail	Recipes	
Device	Model	General	System Setting	Security	Font
HMI model : HMI5070L/HMI5070R/HMI5100L (800 x 480)					
HMI station no : 0					
Port no. : 8000 (used as MODBUS server's port no.)					
<input checked="" type="checkbox"/> Support cMT communication protocol					
Port no. : 8010					

The default TCP Port is 8010. This must match the port assigned to the *Remote* HMI added to the cMT-SVR project.

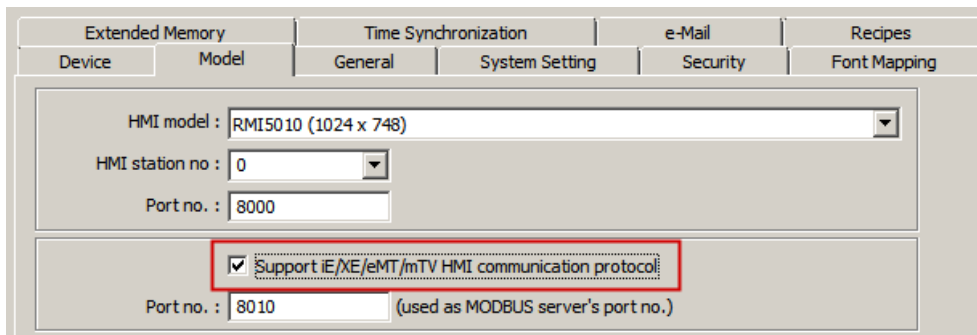
¹ Please refer to the EZwarePlus Programming Manual or Help system for details on configuring a remote connection.

² Requires EZwarePlus 5.01.02 or newer.



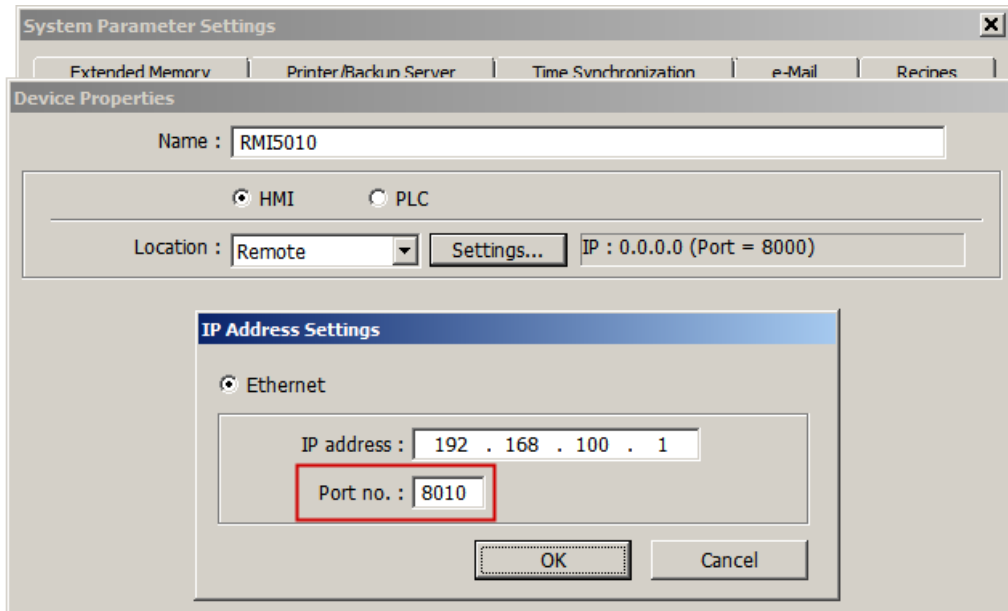
HMI/RMI5001 Requesting Register Data from a cMT-SVR

If an HMI or RMI5001 needs to collect register data from a cMT-SVR, the setup is similar. The cMT-SVR (and any connected PLCs) need to be added to the HMI/RMI5001 EZware project as a *remote*³ HMI/PLC and, in each cMT-SVR EZware project, the *Support iE/XE/eMT/mTV HMI communication protocol* option must be selected on the Model tab of the EZware *System Parameters* dialog:



The default TCP Port is 8010. This must match the port assigned to the *Remote* cMT-SVR added to the HMI/RMI5001 project.

³ Please refer to the EZwarePlus Programming Manual or Help system for details on configuring a remote connection.



cMT Viewer

cMT Viewer is an application that runs on a Windows PC or tablet, on an Apple iPad (iOS v6 or later), and on Android devices (v4.1 or later). cMT Viewer is a free download from the iTunes store or from the Google Play store. Search for **Weintek**. cMT Viewer is pre-installed on the cMT-D090 display. The look and feel is the same across all platforms. However, some configuration options may vary due to differences in PC, Apple, and Android hardware.

Note: The use of the cMT Viewer application is discussed in this document. Setup of the iPad or Android device is user responsibility.

To start the cMT Viewer app, touch the icon on the iPad or Android device.



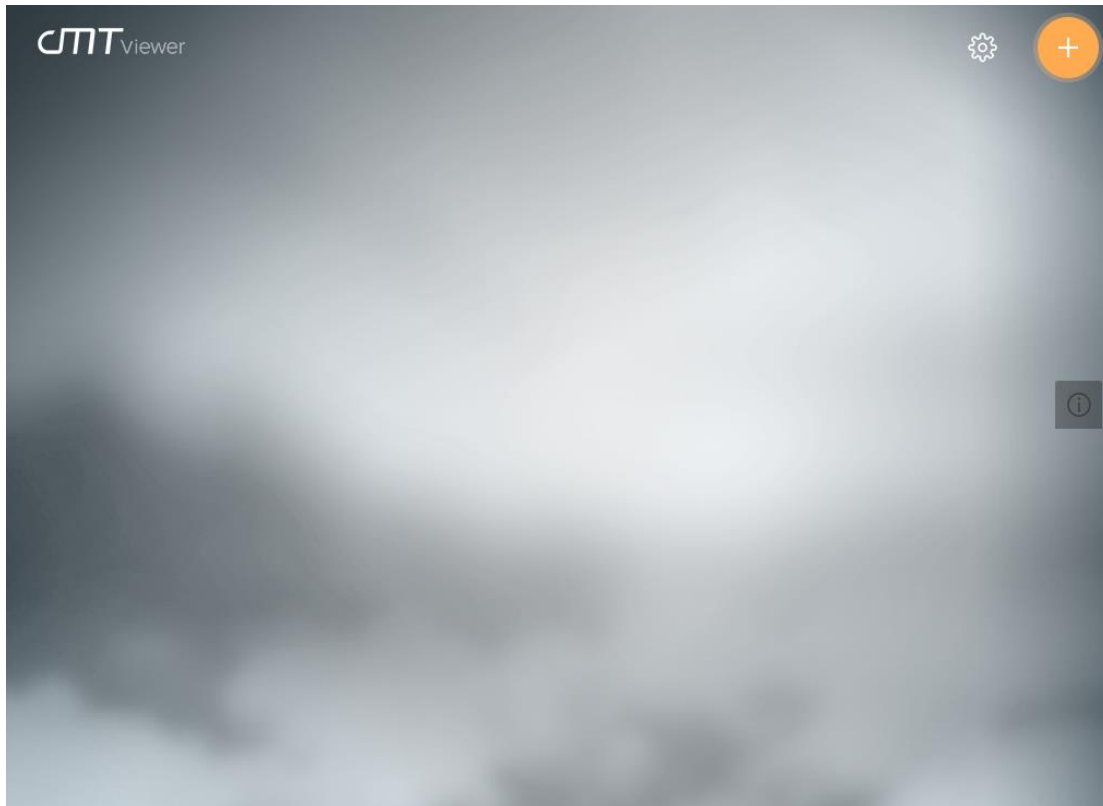
Using the cMT Viewer on an cMT-D090, iPad, and Tablets

The cMT Viewer application connects to and interacts with the project in the cMT-SVR. The cMT-D090 is a 9.7" touchscreen device with a built-in version of the cMT Viewer application. The cMT Viewer application can be downloaded free from the iTunes store for the iPad and from the Google Play store for an Android device. To find the application, visit the appropriate store and search for **Weintek**.

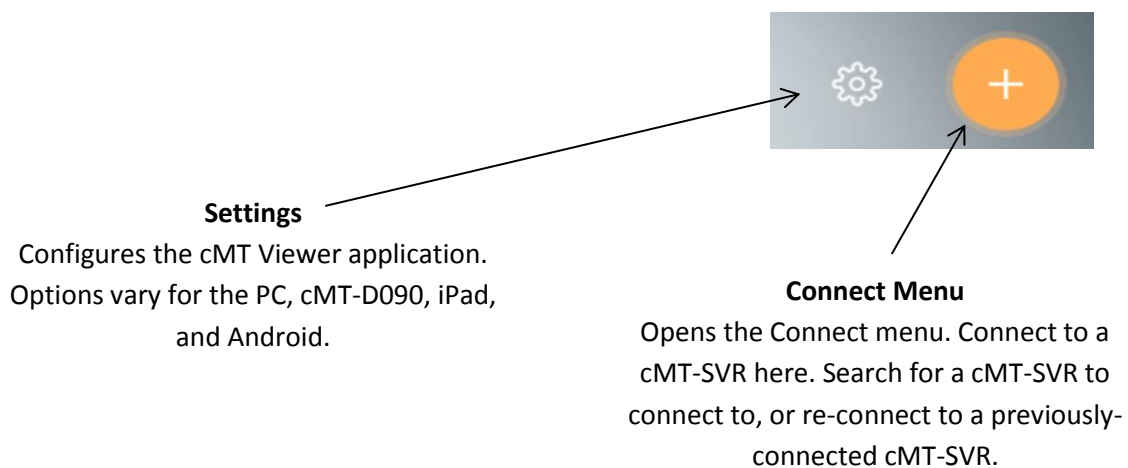
Note: cMT Viewer is also available for the PC. It is installed with EZwarePlus, and can be started from the EZwarePlus Tools menu, or from Utility Manager.

Configure cMT Viewer on the cMT-D090

When the cMT-D090 powers up, it displays the default cMT Viewer screen.

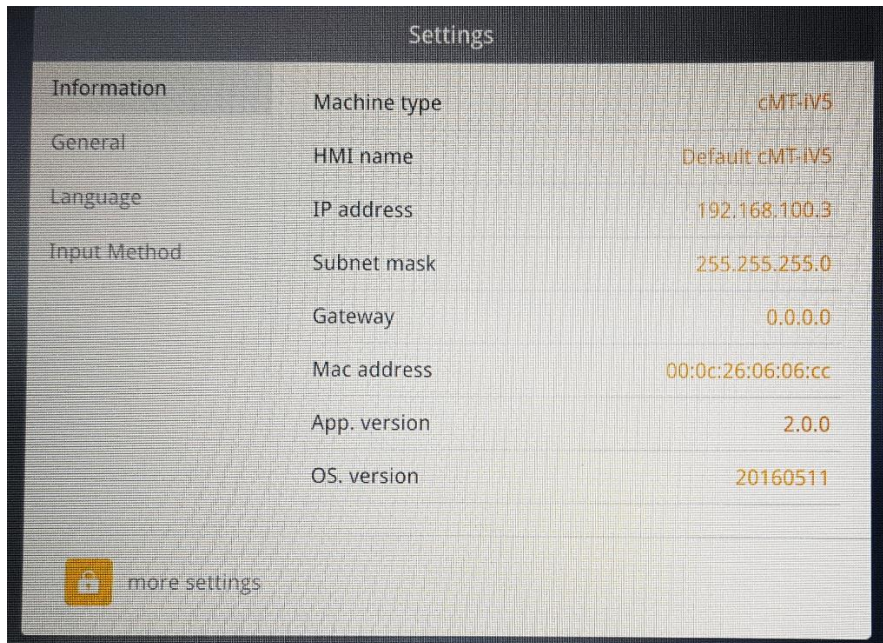


When the cMT-D090 does not have any active connections to cMT-SVR projects, it looks like the above. There are two buttons on the top-right corner of the cMT Viewer screen, a Settings button and a Connect Menu button.



Settings Menu

Touch the 'gear' icon at the top right part of the screen to open the **Settings** menu.



The 'closed' padlock on the Setting tab indicates that security is in place, and only the System password can be changed. The current System password is required to change the password.

Note: The default System password is 111111. Also, the cMT-D090 system password can be reset by entering: 'default111111'

If the user forgets the password to get into the system settings on cMT-D090 they can enter the password above. This erases any uploaded projects stored on the cMT-D090 and resets the password to 111111. This operation does not erase the project on the cMT-SVR and it can be uploaded after a connection is established. The password provides access to: HMI name, Direction (landscape/portrait), Time / Date settings, Network Settings.

When default111111 is entered in the password a warning message pops up saying: This special password will reset HMI to factory settings, continue? When ok is pressed the startup screen is shown as the HMI comes from the factory. The user can then go to the settings screen and enter 111111 to access the settings listed above.

The **Information** tab displays the current configuration.

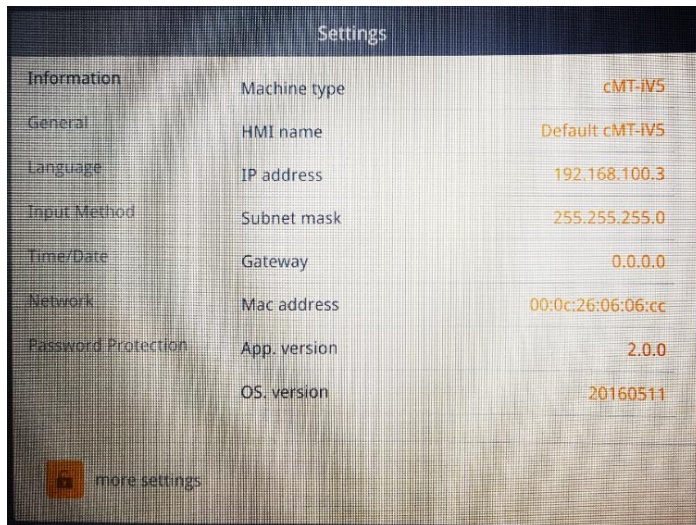
The **General** tab allows changing of the password (current password required) and adjusting the brightness, audio output level, and backlight saver (no password needed).

The **Language** tab selects the language that is displayed by the cMT Viewer's menus and selections. Languages used by the cMT-SVR project are specified in the project itself.

The **Input Method** tab selects the language that is used to enter data into the cMT-D090 and provides access to international keyboards.

Note: *International keyboards are selected with the “Earth” key on the pop up keyboard.*

To change settings such as the Date/Time, IP information, and the unit name, you must log in with the System password. Touch the ‘closed’ padlock icon on the Setting tab. Enter the System password and touch OK. The **Time/Date**, **Network** and **Password Protection** tabs are displayed after the System password has been entered.



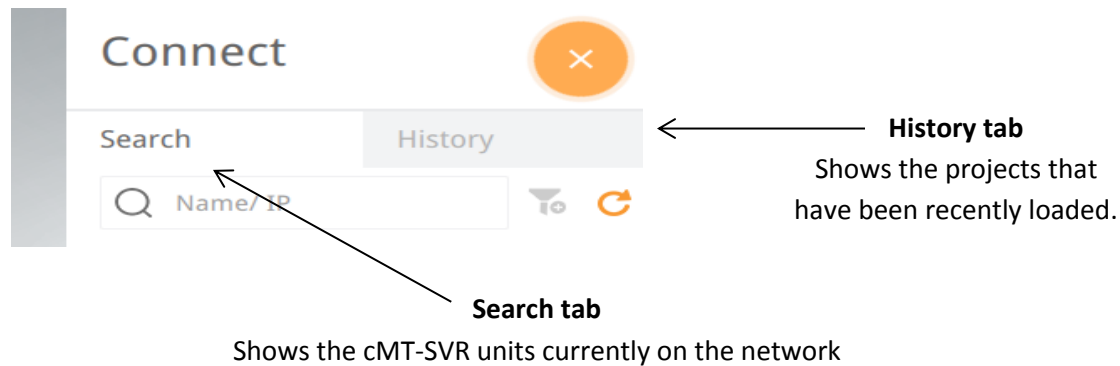
The **Time/Date** tab allows changing the date and time on the cMT-D090.

The **Network** tab allows selection of getting an IP address automatically or specifying a static IP address. If **Obtain an IP address automatically** is enabled, a DHCP Server must be on the network. If **Obtain an IP address automatically** is disabled, enter the IP address and subnet mask, and if needed, the Gateway and DNS Server addresses. Make sure that the IP settings are appropriate for the network on which the cMT-SVR(s) reside.

The **Password Protection** tab allows changing various passwords (current password *not* required), and the selection of which actions will require the password:

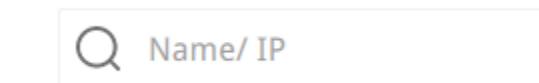
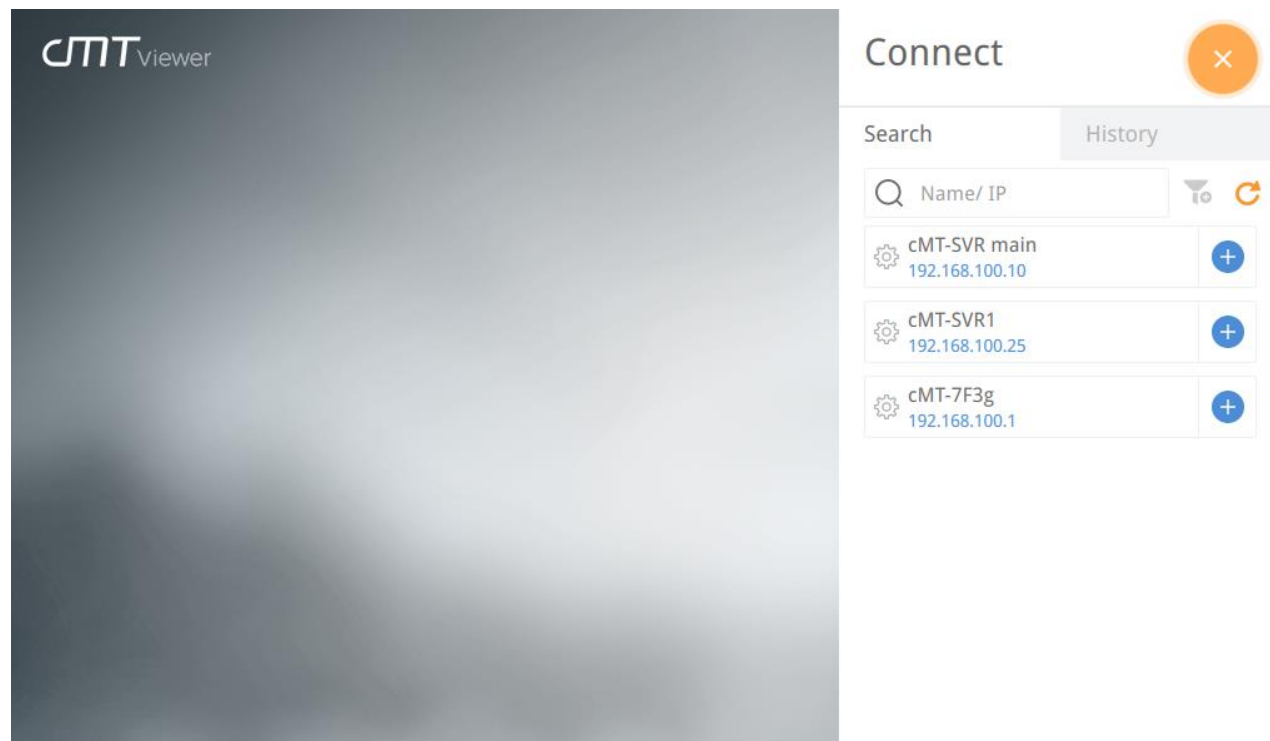
- **Open Project:** if selected, the password is required to connect to and open a project in a cMT-SVR.
- **Close Project:** if selected, the password is required to close a project and disconnect from a cMT-SVR.
- **Server Settings:** if selected, the password is required to change settings in the cMT-SVR from the cMT-D090.
- **Clean History:** if selected, the password is required to clear the historical data files stored on the cMT-SVR.

Connect Menu







Search menu

Touch the 'Search' tab to open the **Search** menu. The Search menu displays all of the cMT-SVR units on the current network.

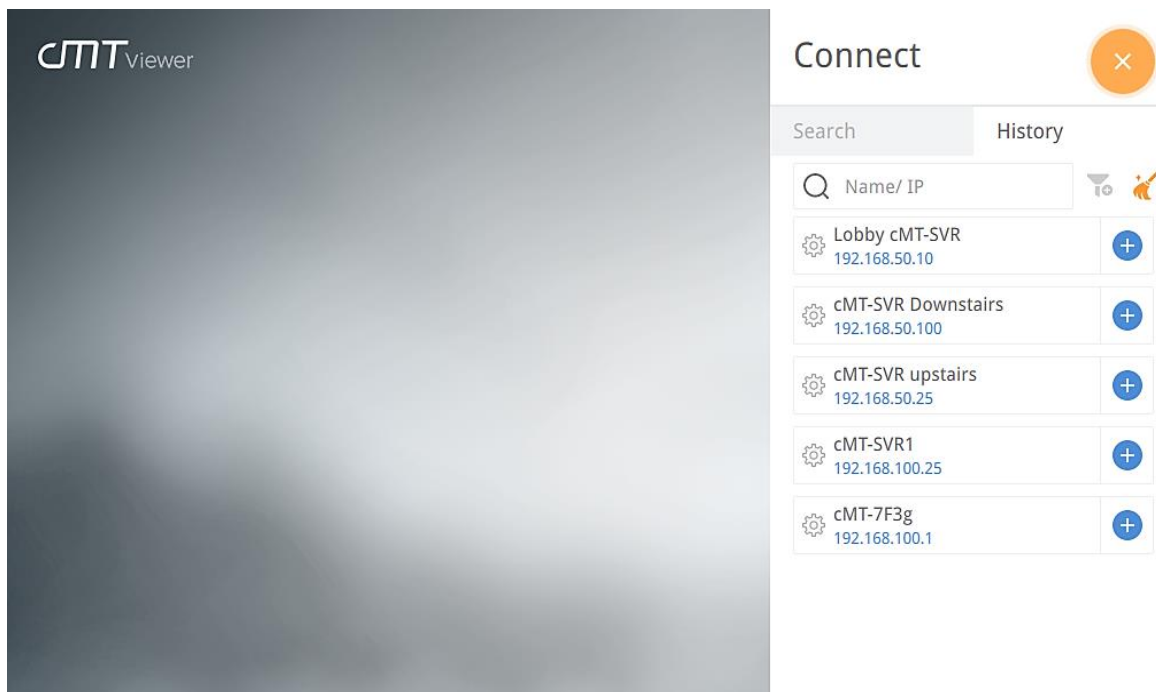




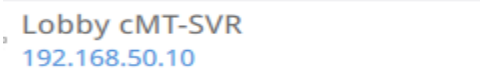


In the **Name/IP** box, enter the name or IP address of the HMI5010 unit to connect to and press the 'Enter' key, or touch the **Go** button for the corresponding cMT-SVR unit in the list.

-  Touch the **Refresh** button to update the displayed information.
-  Touch the **Close** button to close the Main screen.
- **cMT-SVR main**
192.168.100.10
Touch the **cMT-SVR** image to identify the unit. The green LED on the unit will blink 3 times.
-  Touch the **Go** button to connect to the corresponding cMT-SVR and load the project. The password may be required.
-  Touch the **Setup** button to open the configuration page for the corresponding cMT-SVR. The password may be required.

History menu

Touch the 'History' tab to open the **History** menu. The History screen displays all the cMT-SVR units that the cMT Viewer has connected to in the past.



-  Touch the **Clear History** icon to remove all items from the History.
 -  Touch the **Close** icon to return to the main screen.
-
-  Touch the **cMT-SVR** image to identify the unit. The green LED on the unit will blink 3 times.
 -  Touch the **Go** button to connect to the selected cMT-SVR and load the project. The password may be required.
 -  Touch the **Setup** button to open the configuration page for the selected cMT-SVR. The password may be required. These are the same configuration settings that are shown in the web browser (see page 4).

Return to main screen (Project Screen)

Touch the **Start Button** when connected to a cMT-SVR and viewing a project to open the **Project** screen. A thumbnail image of the last-viewed screen will be displayed for the most recently-connected cMT-SVR units. Touch the image to quickly resume that project.



The start button appears in the top left corner of the cMT Viewer window and is visible to take the operator back to the default cMT Viewer screen when a cMT-SVR project is being viewed:

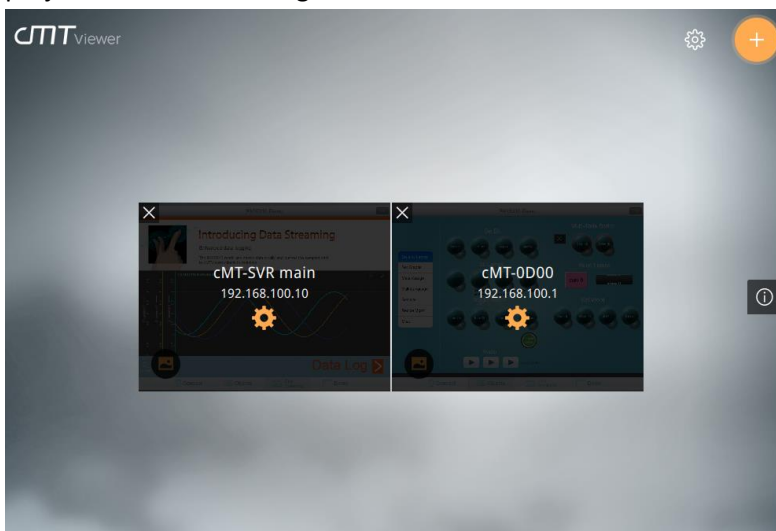



The button is placed at the top-left corner of the cMT-D090 screen by default when a project is running, but can be moved to a different location by the user by holding and dragging the icon elsewhere.

The button can also be hidden under General in the Setting dialog; there is an option for Show Start button. When this “show start button” option is disabled, a Hidden Start position option is available allowing the user to place a hidden start button in the top left or top right corner of the window. The hidden start button works the same as the normal start button above but is not visible to the user.



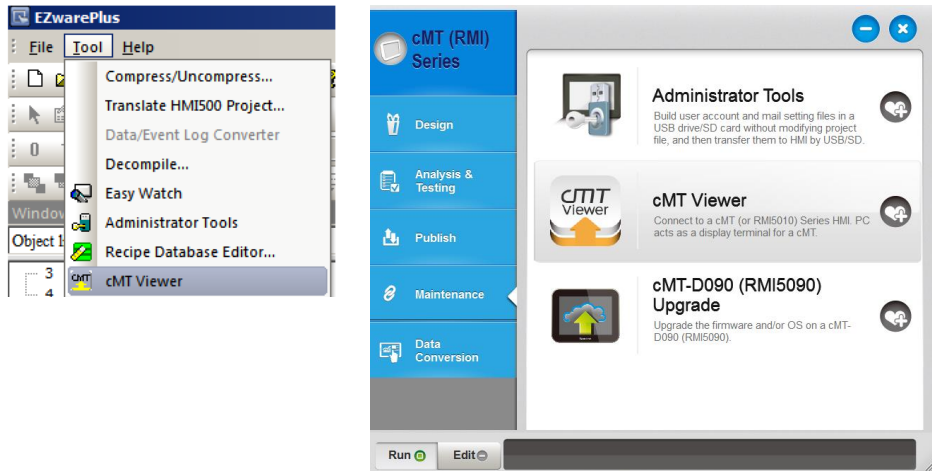
-  Touch the **Close** icon to remove the selected project from the list.
-  Touch the **Information** icon to show the IP address and HMI name for each of the cMT-SVR projects shown. The image on the cMT-D090 will now look like this:



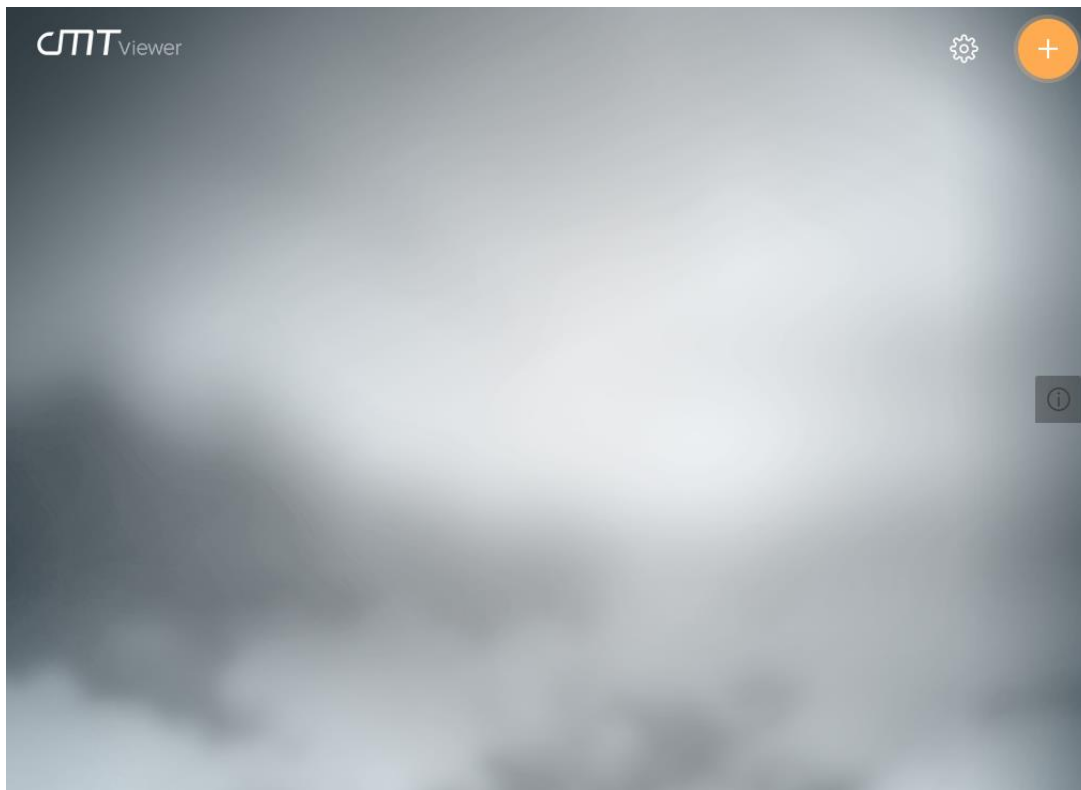
-  Touch the **Setup** button to open the configuration page for the selected cMT-SVR. The password may be required. These are the same configuration settings that are shown in the web browser (see page 4).

Using the cMT Viewer on a Windows PC

To start the cMT Viewer on a PC, click on the **Tools** menu in EZwarePlus and select **cMT Viewer**, or open the Utility Manager, select the **Maintenance** tab and click on **cMT Viewer**.

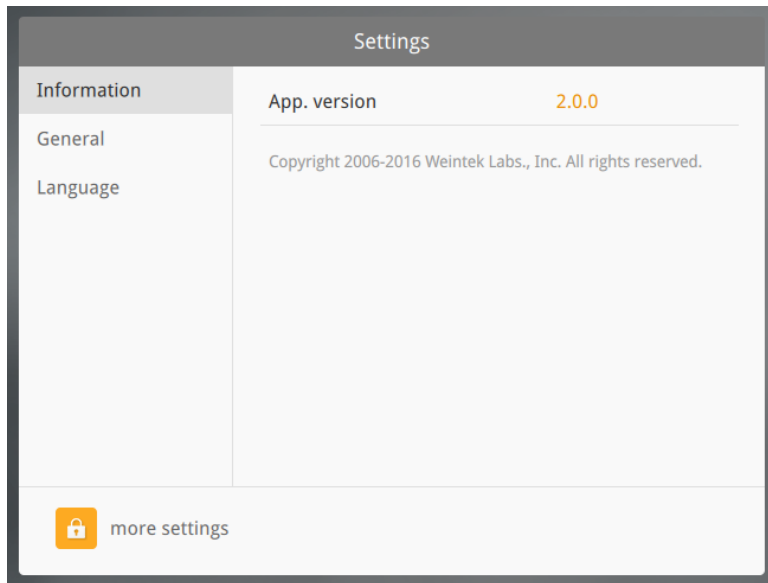


The main page is shown.



Settings Menu

Click the 'Gear' icon at the top right corner of the cMT Viewer main page to open the **Settings** menu. The Settings menu controls how the cMT Viewer application looks and feels.



The **Information** tab displays the current application version.

The **General** tab allows adjusting the cMT Viewer to fit the window when maximized, and switching between landscape and portrait mode.

The **Language** tab selects the language that is displayed by the cMT Viewer's menus and selections. Languages used by the cMT-SVR project are specified in the project itself.

To change settings such as enabling Monitor Mode or applying password protection, you must log in with the System password. Click the 'closed' padlock icon on the Setting tab. Enter the System password and select OK. The **Password Protection** tab is displayed after the System password has been entered. That tab allows changing various passwords (current password *not* required), and the selection of which actions will require the password:

- **Open Project:** if selected, the password is required to connect to and open a project in a cMT-SVR.
- **Close Project:** if selected, the password is required to close a project and disconnect from a cMT-SVR.
- **Server Settings:** if selected, the password is required to change settings in the cMT-SVR from the cMT-D090.
- **Clean History:** if selected, the password is required to clear the historical data files stored on the cMT-SVR.

The menu and navigation structure within the cMT Viewer application on the PC operates the same way as illustrated above for the cMT-D090.

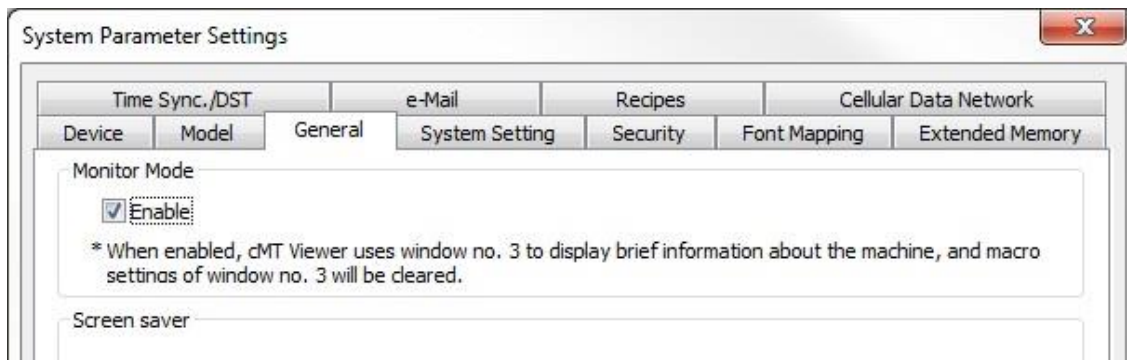
Monitor Mode

Monitor Mode was created to enable real-time viewability of values using the cMT Viewer program. Monitor Mode is off by default, but is be easily enabled. There are two steps to enabling Monitor Mode: Creating the Monitor Mode Screen in a cMT-SVR project, and enabling Monitor Mode visualization on the cMT Viewer Application.

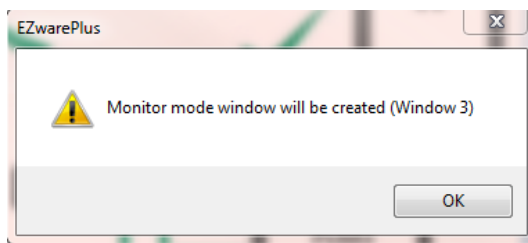
Note: A maximum of 50 cMT-SVR projects can be shown in Monitor Mode.

Creating the Monitor Mode screen in a cMT-SVR project

To enable Monitor Mode in a cMT-SVR project, open the cMT-SVR project file in EZwarePlus. Enter the *Edit* menu and select *System Parameters*. Then, select the *General* tab, and click the **Enable** check-box to turn on Monitor Mode in the cMT-SVR project.



Select **OK** to close the *System Parameter Settings* window. A confirmation window will pop up; select the **OK** button:



Notice that a new window has been created; Window 3, titled **Monitor Mode**. This window is the thumbnail image of the project as seen with the cMT Viewer application.

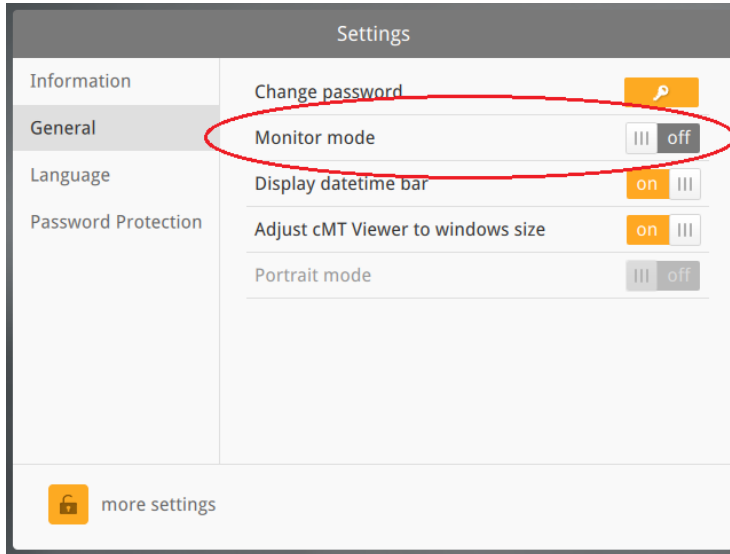
Double-click the Monitor Mode Window to make changes to the contents of the window. You can place objects, numeric displays, indicators, alarm displays, bar graphs, and more on this window.

Note: Information placed on this window will be updated in real-time **to be seen with the cMT Viewer application only**.

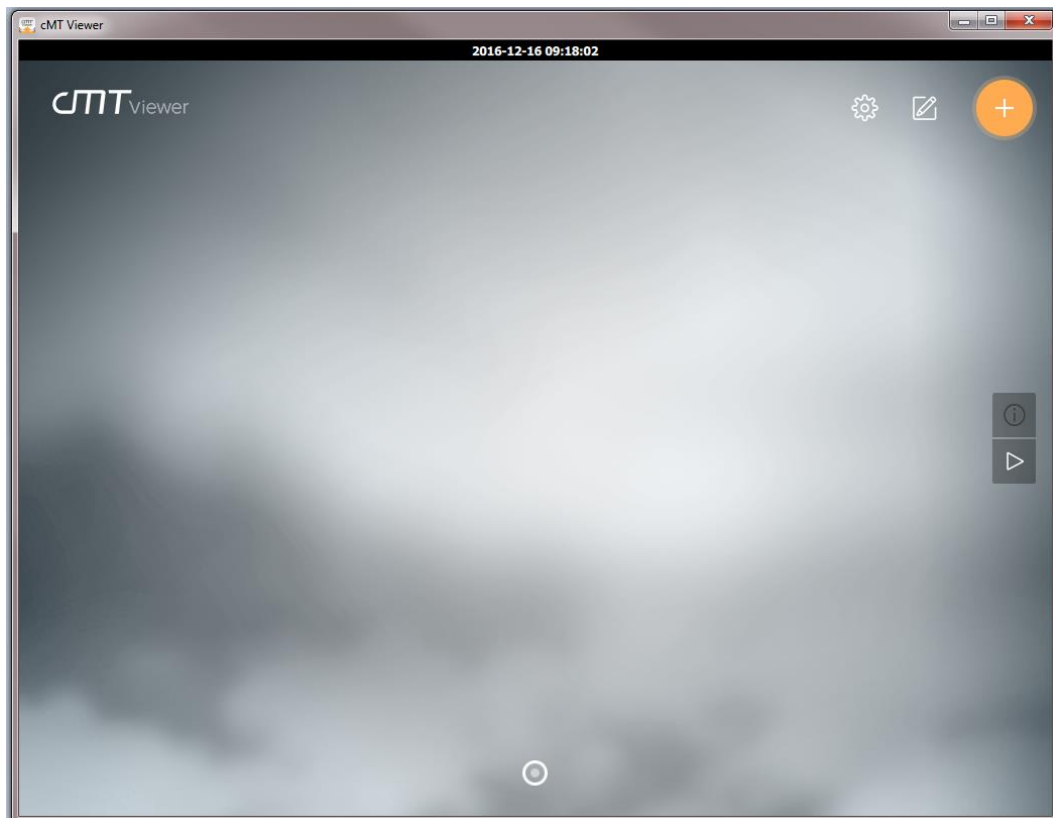
Enabling Monitor Mode visualization on cMT Viewer






To enable Monitor Mode on the cMT Viewer application:

1. At the main cMT Viewer window, enter the **Settings** menu.
2. Select the “closed lock” icon and enter the System Password (default is 111111).
3. Select the **General** tab, and click the switch to enable Monitor Mode:



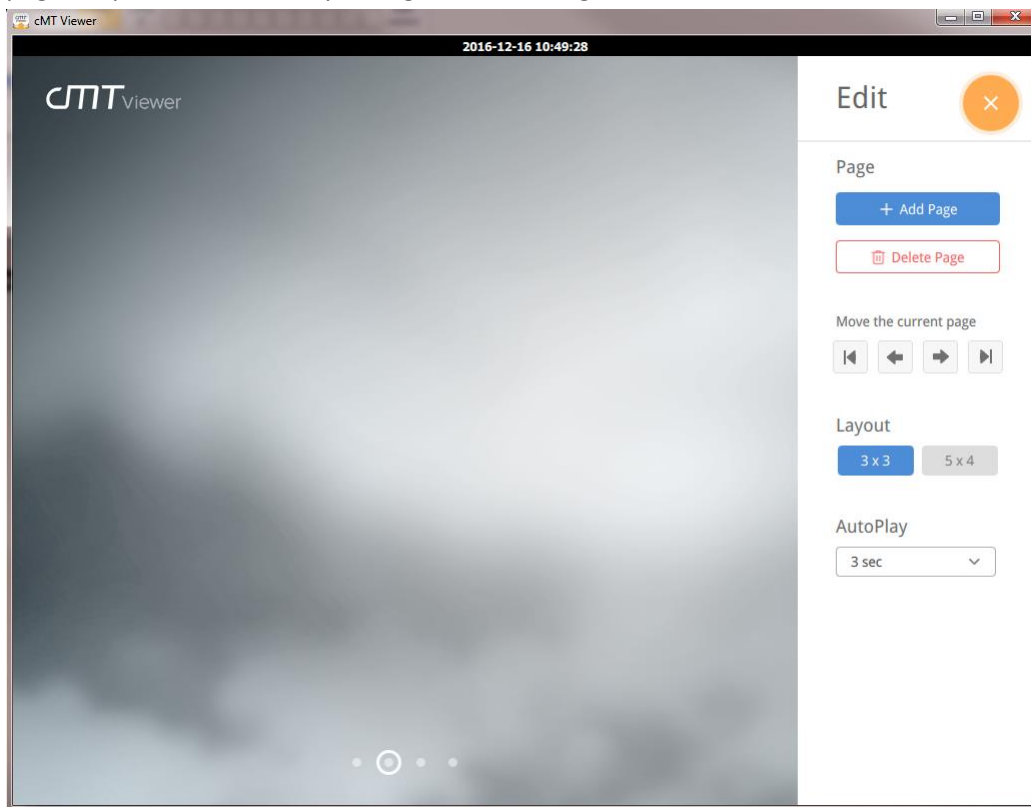
4. Once Monitor Mode is enabled, select the Close button to return to the main screen. Notice the additional icons now present:




-  Touch the **Edit** button to bring up the **Edit** menu, where adjustments to the viewability of the Monitor Mode can be made (see **Edit Menu**) below.
 -  Touch the **Play** button to begin the AutoPlay function. The AutoPlay function scrolls through the Monitor Mode pages at a pre-set interval. When the Play button is pressed, the following two icons appear:
 -  The **Pause** Button pauses the AutoPlay function. Press once more to resume.
 -  The **Stop** button stops the AutoPlay function and returns to the main cMT Viewer screen.
- Note:** When AutoPlay is active, the **Settings**, **Edit** and **Connect** menus are hidden.
-  The **Page Indicator** at the bottom of the screen shows which page is currently being shown. Select a different page to display by pressing the appropriate page on the indicator.

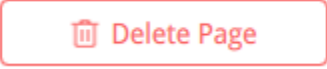
Edit Menu

The **Edit** Menu is the Monitor Mode viewability configuration menu. The Edit menu controls the pages, layout, and AutoPlay configuration settings:




- 

Press the **Add Page** button to add a page to the Monitor Mode page. Up to 9 pages can be created, and a single page can show one or more cMT-SVR projects.


- 

Press the **Delete Page** button to delete the selected page (the current page is shown by the page indicator at the bottom of the screen). You will be asked to confirm the delete.


Note: At least one page must be created for Monitor Mode to operate. The above button will be greyed out if there is only one page.

- 

Press any of the **Page Management** buttons to move the currently selected page. Pages can be moved forward or backward by one location, or can be moved to the beginning or ending page in the page order.

- 

Press the **Layout** button that corresponds with your desired page layout. A maximum of 9 (in 3x3 format) or 20 (in 5x4 format) cMT-SVR projects can be viewed on a single page. **This is a global setting, and will apply to all the pages in Monitor Mode.** Regardless of the layout chosen, the maximum number of cMT-SVR projects that can be viewed in Monitor mode is 50.

- 

Press the **AutoPlay Timing** button to adjust the amount of time each page is shown before advancing to the next. 3 Seconds is the default setting, but can be changed to allow up to 60 seconds before advancing. **This is a global setting, and will apply to all the pages in Monitor Mode.**

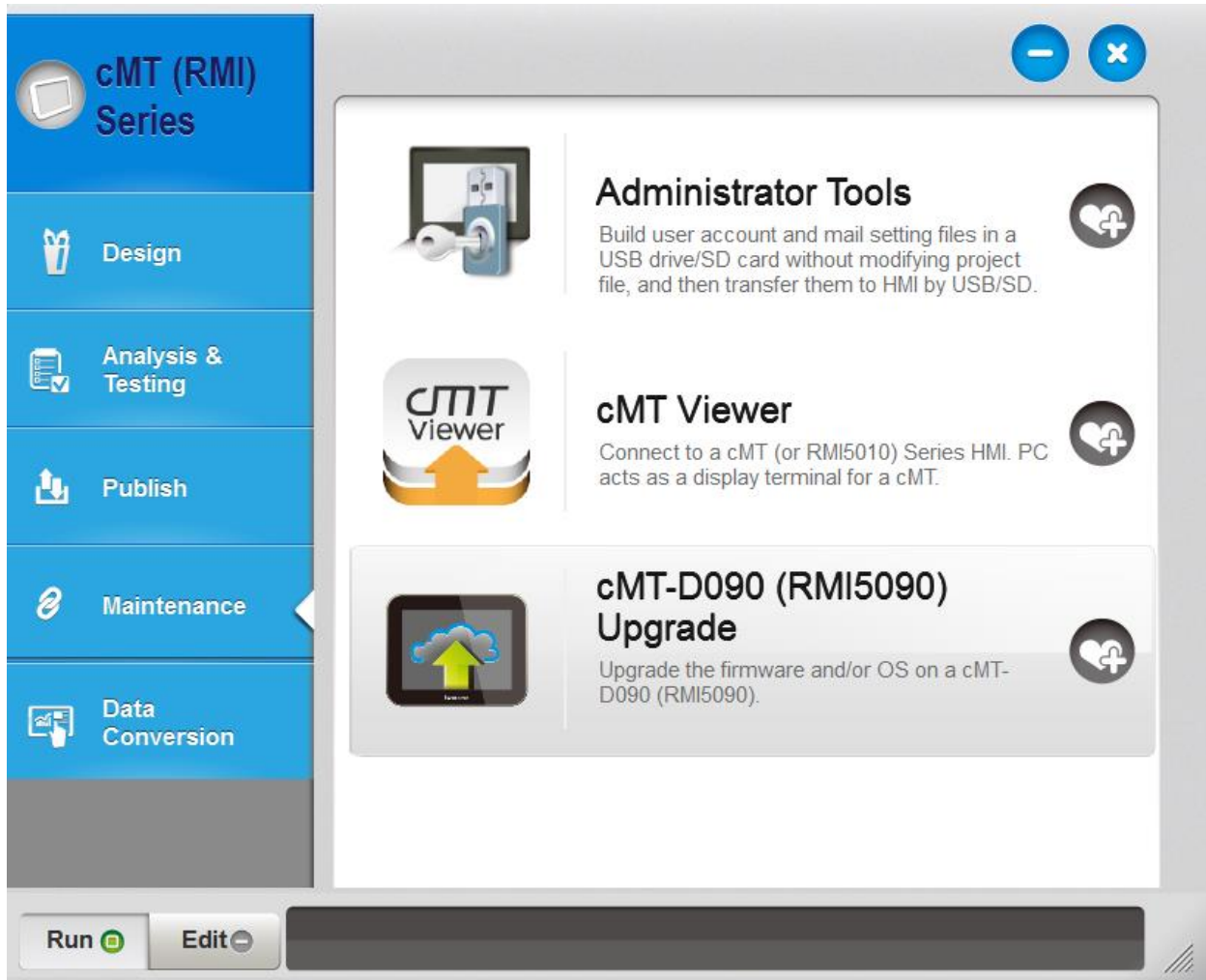
Once the Monitor Mode settings have been adjusted to their desired values, select the **Close** icon to exit the Edit Menu and return to the main cMT viewer screen. Then, connect to a cMT-SVR device via the **Connect** menu. Once a cMT-SVR device is connected, you will be able to view thumbnail images of the cMT-SVR projects from the main cMT Viewer overview screen.

If the cMT-SVR projects have Monitor Mode enabled, the thumbnail image of the cMT-SVR project will be Window 3. This window updates automatically so the user will always see up-to-date accurate information without having to enter the specific cMT-SVR project and navigate to the desired screen. If the cMT-SVR projects do not feature Monitor Mode, a thumbnail image “snapshot” of the last cMT-SVR project will be shown on the overview screen.

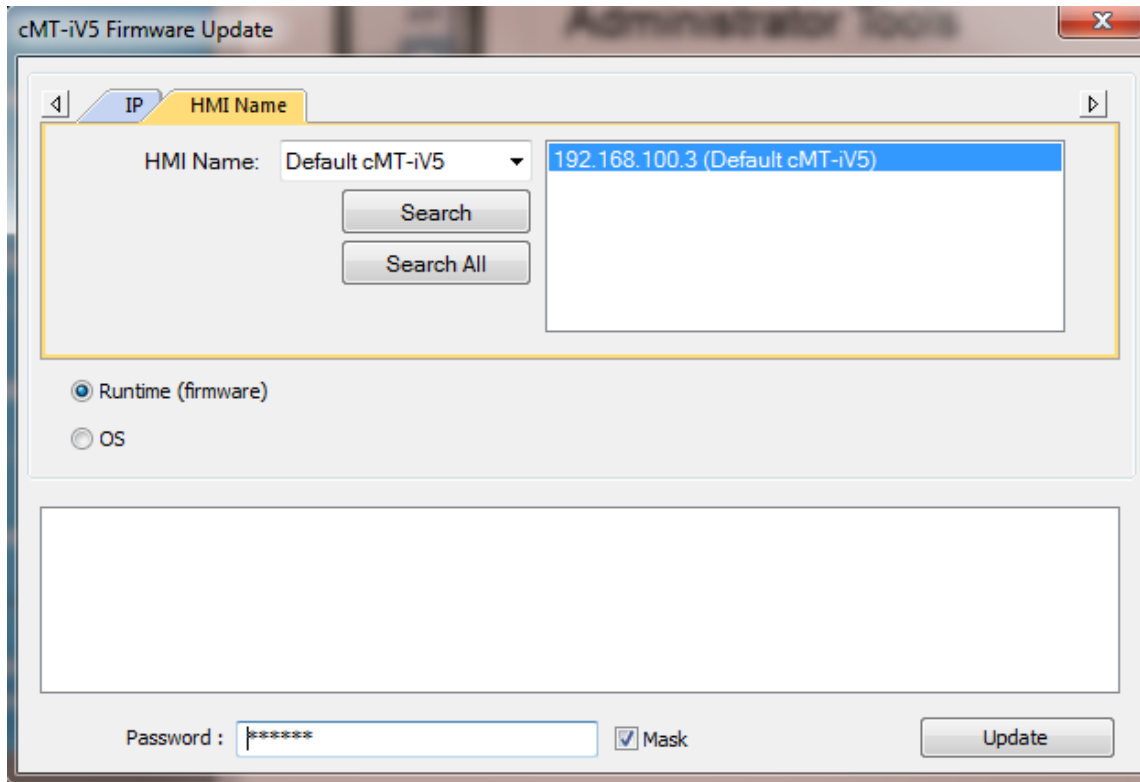
Update cMT-D090 OS and/or Firmware

The Utility Manager included with EZwarePlus includes a mechanism to update the cMT-D090 operating system and/or firmware. Updating of the cMT-D090 operating system (OS) is not normally something that needs to be done by the end user. However, in certain situations, updates in the field may be necessary.

Update the firmware in the cMT-D090 anytime you program the cMT-SVR with a newer version of EZwarePlus software. To update the firmware, use the Utility Manager tool included with EZwarePlus.



Select **cMT (RMI) Series** in the upper-left corner of the Utility Manager, click the **Maintenance** tab, and select **cMT-D090 Upgrade**.



Enter the correct IP address for the cMT-D090. With *Runtime (firmware)* selected, click the *Update* button to update the firmware. The utility will locate the proper firmware file and transfer it to the cMT-D090.

Note: Please do not attempt to update the Operating System (OS) without first contacting Maple Systems Technical Support. Unlike the firmware, the operating system file is not supplied with EZwarePlus.

WARNING: An improper OS update can result in a nonfunctional unit.

Your Industrial Control Solutions Source

www.maplesystems.com



1010-1026 Rev. 03