

# TECHNICAL NOTE

**Maple Model(s)**

**Title**

**TN5104**

Graphic HMIs

Label Library Translation

P/N: 0907-5104

Rev. 00 Date: 05/06/2015



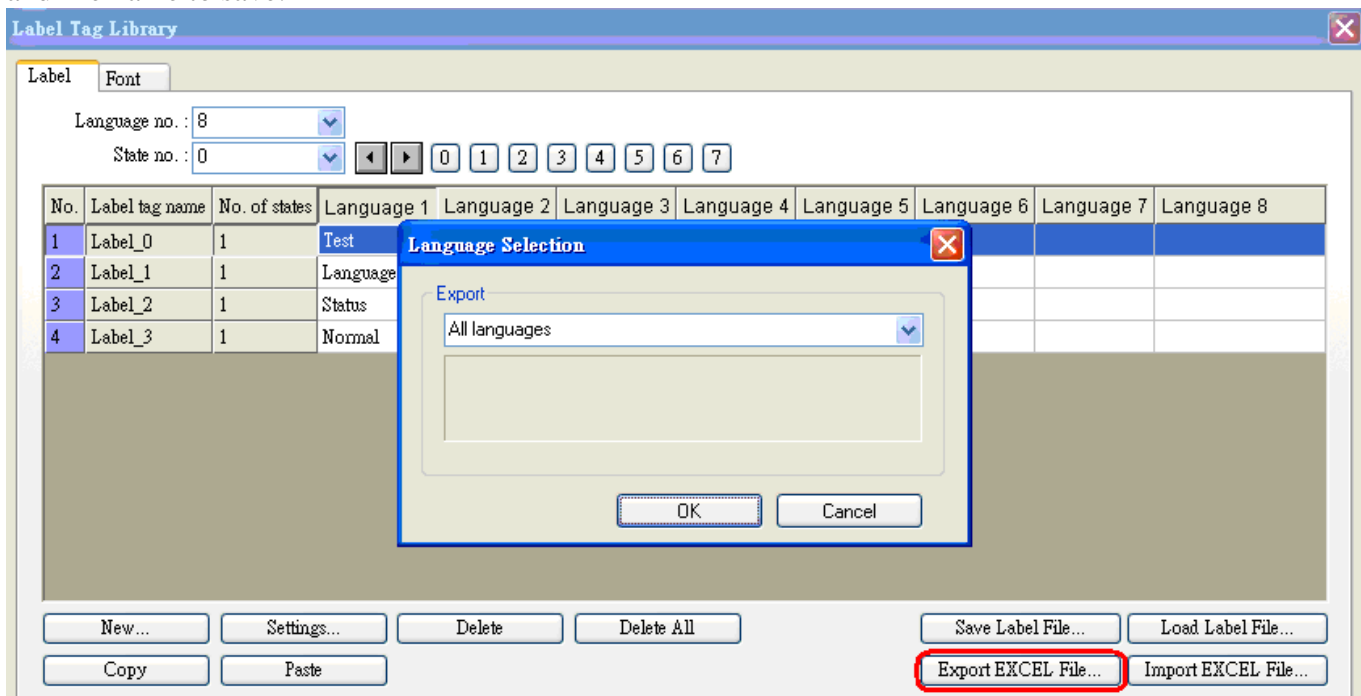
## Summary

This document provides information concerning the translation of labels library into other languages.

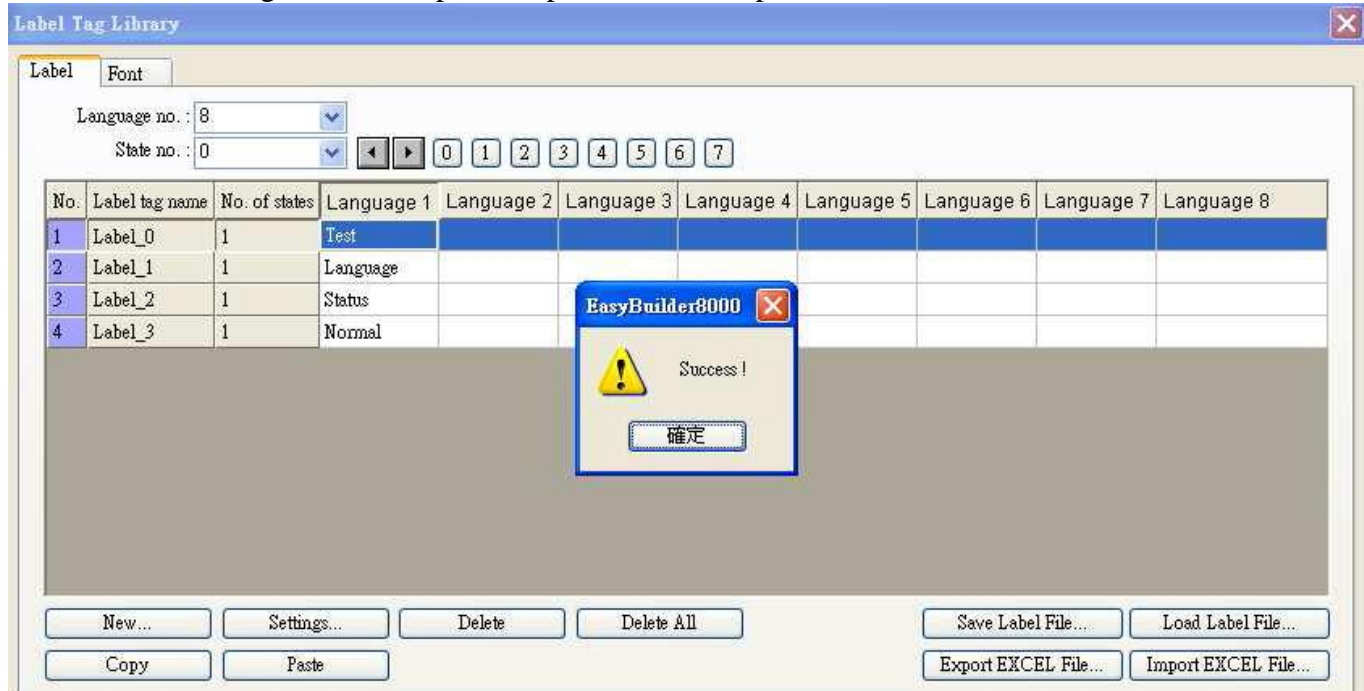
## Solution

### 1. Export EXCEL File

In EZwarePlus, go to Library and select Label ... Click on **[Export EXCEL File]** then select the location and file name to save.



A [Success!] message is shown upon completion of the export.



The selected labels are exported to EXCEL file.

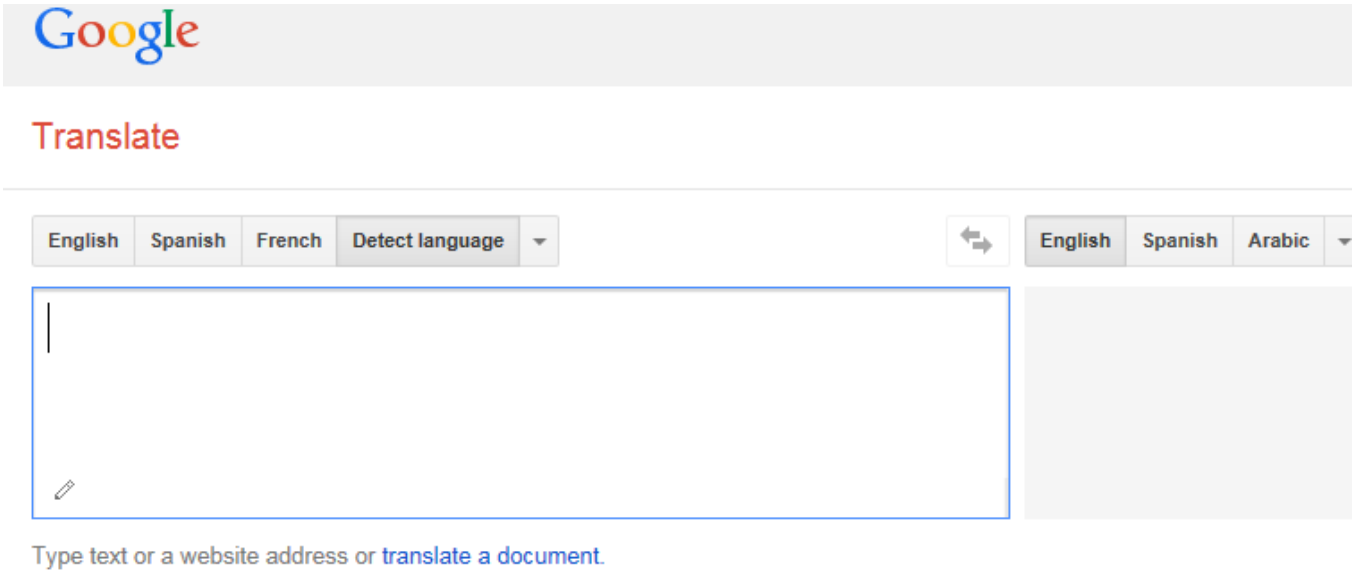
	A	B	C
1	Label_0	Test	
2	Label_1	Language	
3	Label_2	Status	
4	Label_3	Normal	

## 2. Translate

Open the EXCEL file and copy the items to translate to Italian or Simplified Chinese.

	A	B	C
1	Label_0	Test	
2	Label_1	Language	
3	Label_2	Status	
4	Label_3	Normal	

To translate using Google, go to: <http://translate.google.com/>.



Paste the copied items to the translation field of Google, select from and to which language, click [Translate], and see the result on the right side. For Example:

a. English->Italian



From: English To: Italian Translate

Test  
Language  
Status  
Normal

English to Italian translation

Test  
Lingua  
Status  
Normale

b. English->Simplified Chinese



From: English To: Chinese (Simplified) Translate

Test  
Language  
Status  
Normal

English to Chinese (Simplified) translation

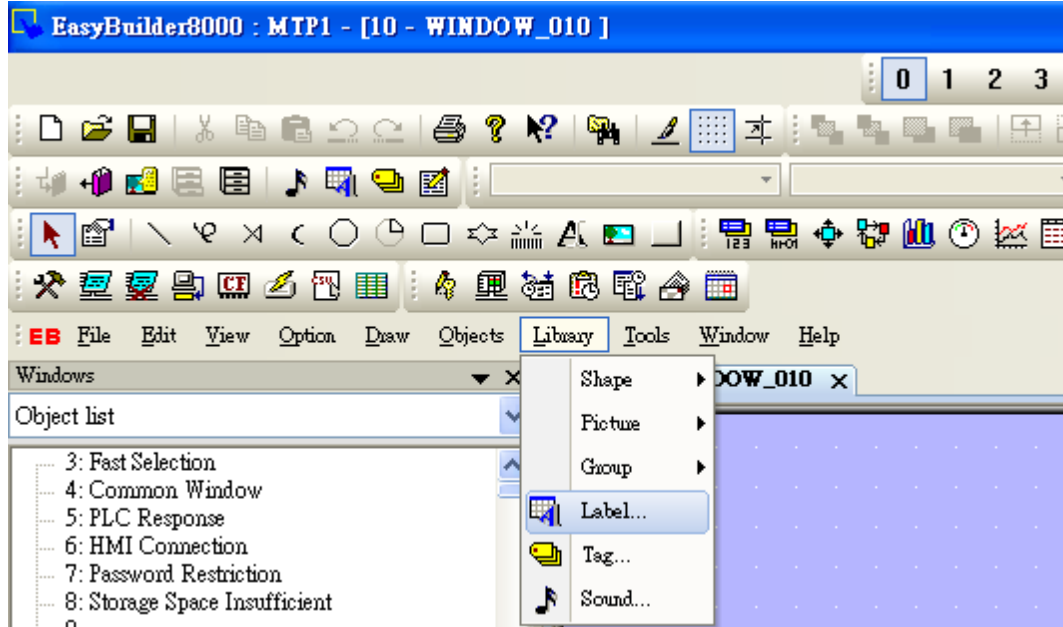
测试  
语言  
状态  
正常

This demonstration shows how to translate English to Italian and Simplified Chinese. Copy the translated items and paste to the EXCEL file columns **[Language 2]** and **[Language 3]**.

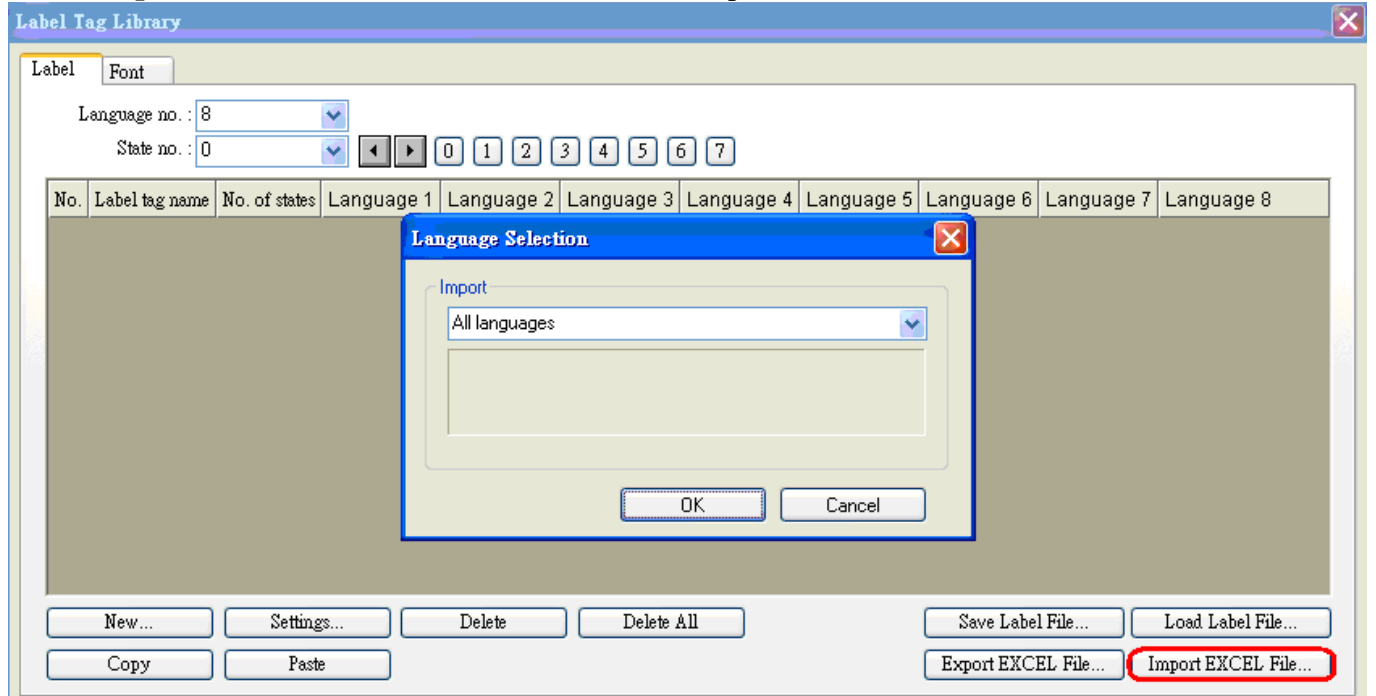
	A	B	C	D
1	Label_0	Test	Test	测试
2	Label_1	Language	Lingua	语言
3	Label_2	Status	Status	状态
4	Label_3	Normal	Normale	正常

### 3. Import EXCEL File

Open EZwarePlus **[Library]/ [Label]**.



Click **[Import EXCEL File]** and select the file to be imported.



The EXCEL file is then successfully imported.

