

TECHNICAL NOTE

Maple Model(s)

Title

TN5032

Graphic HMIs

International Characters in EZware

P/N: 0907-5032

Rev. 01 Date: 09/03/2014



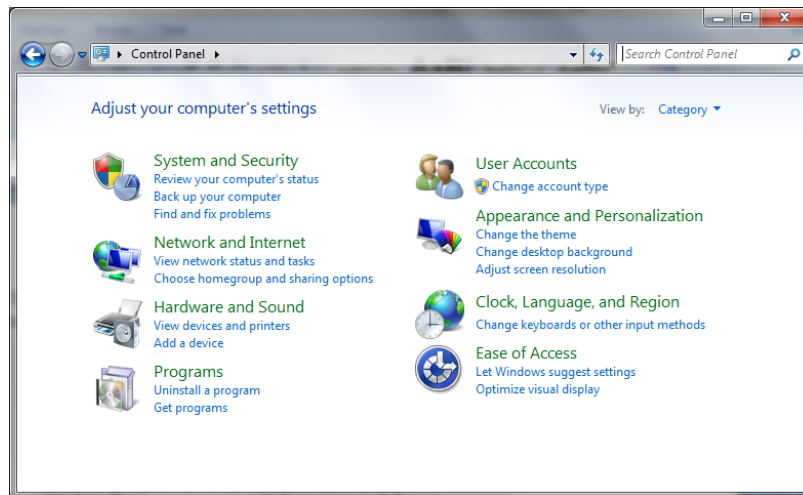
Summary

EZware Configuration Software for the Graphic HMI operator interfaces allows configuration in multiple languages. Many languages require international characters. This technical note describes how to enable a Windows PC to display international characters, and how to use international characters in EZware projects.

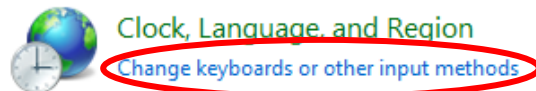
Solution

To set up international characters on a Windows® PC...

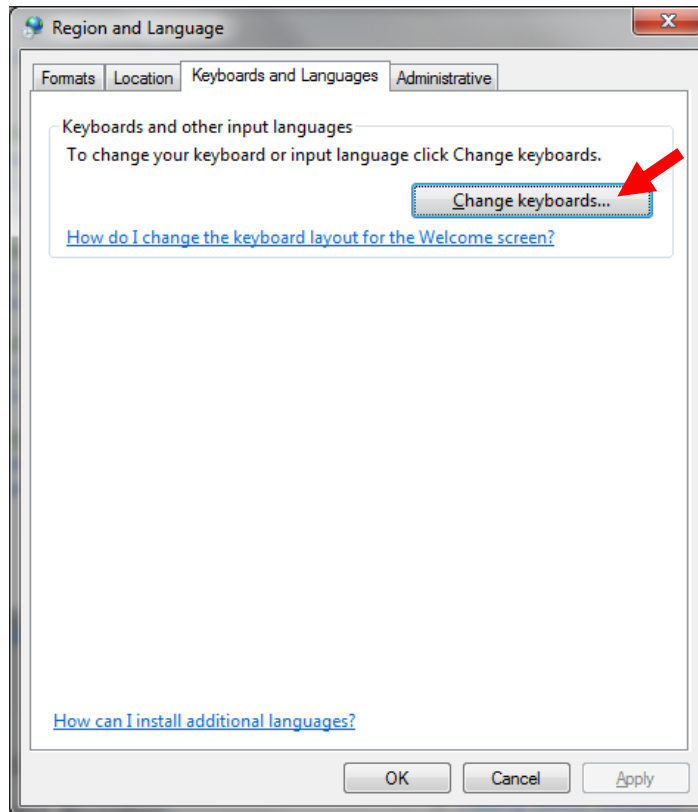
1. From the Microsoft® Windows® *Start* menu, select *Control Panel*. The *Control Panel* dialog box appears.



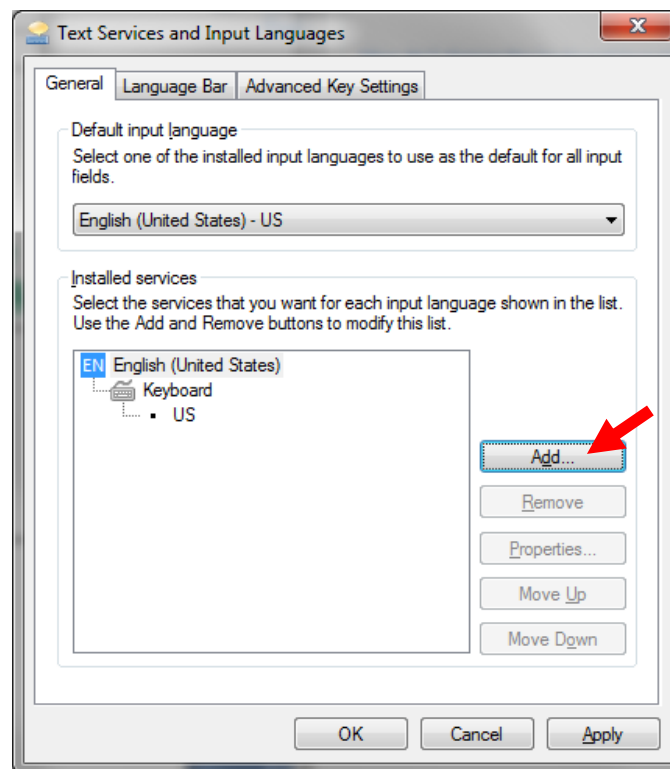
2. Select *Change keyboards or other input methods* beneath *Clock Language, and Region*



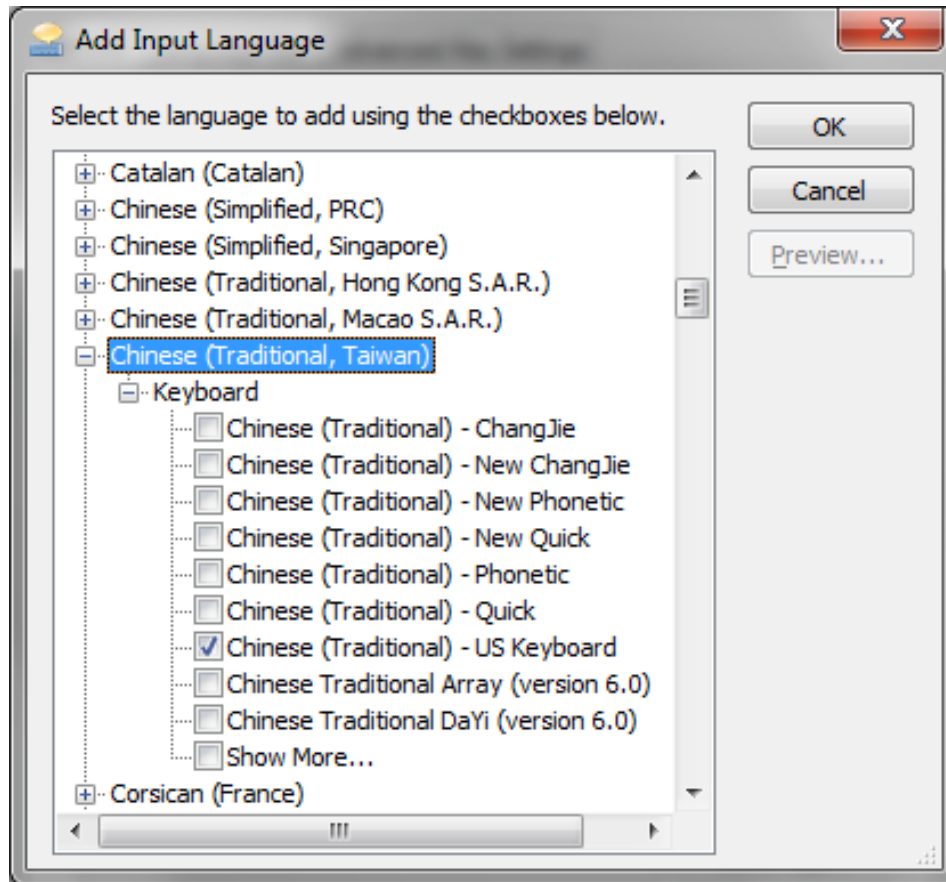
3. Select *Change Keyboards* on the *Keyboards and Languages* tab.



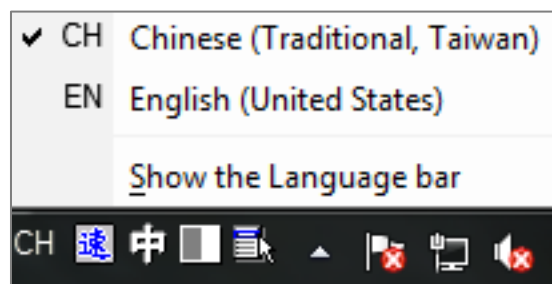
4. Select *Add...*



5. Select the language to add using the checkboxes in the *Add Input Language* window.




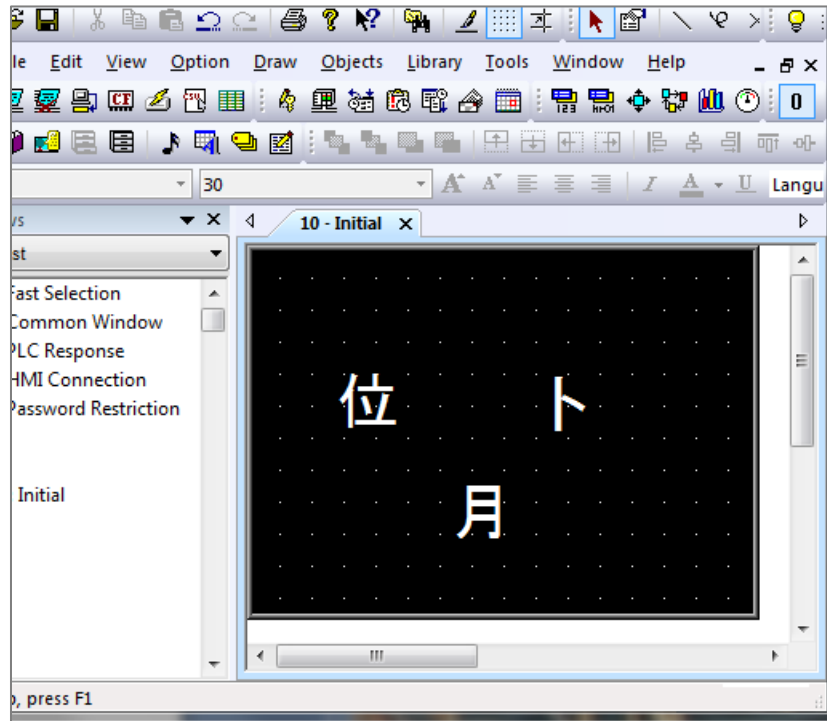
6. Click *OK*.
7. The language bar will appear on the desktop taskbar. This bar allows the computer's language character sets to switch between English and the selected language.



8. Select the appropriate language on the desktop taskbar to toggle between input languages.

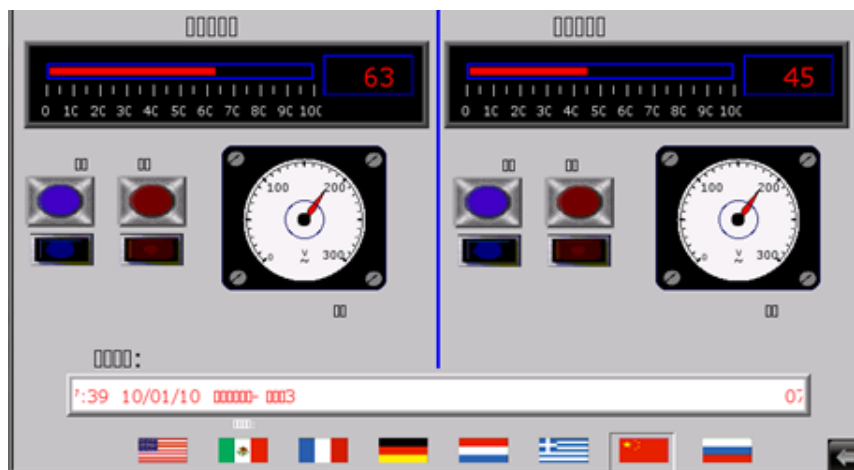
To use international characters in an EZware project...

Click the  icon or select *Draw > Text* to create a Text Object. Characters from the language selected in the Language bar will display as they are typed.

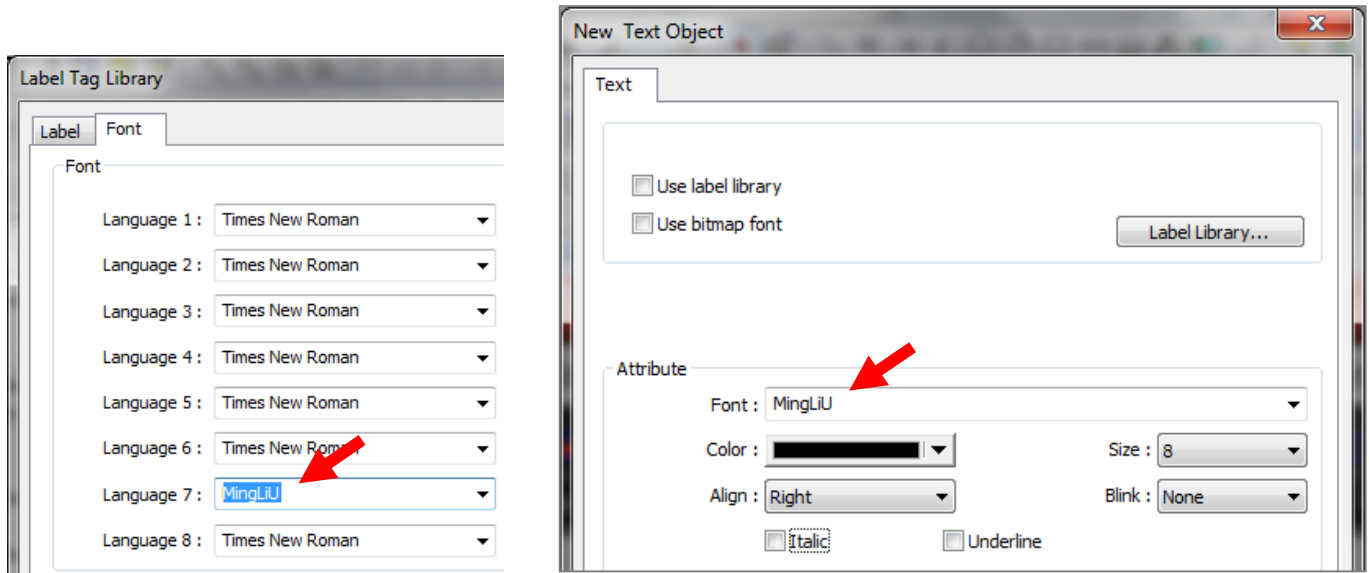


To configure your EZware project to switch between languages, please refer to the EZware Programming Manual.

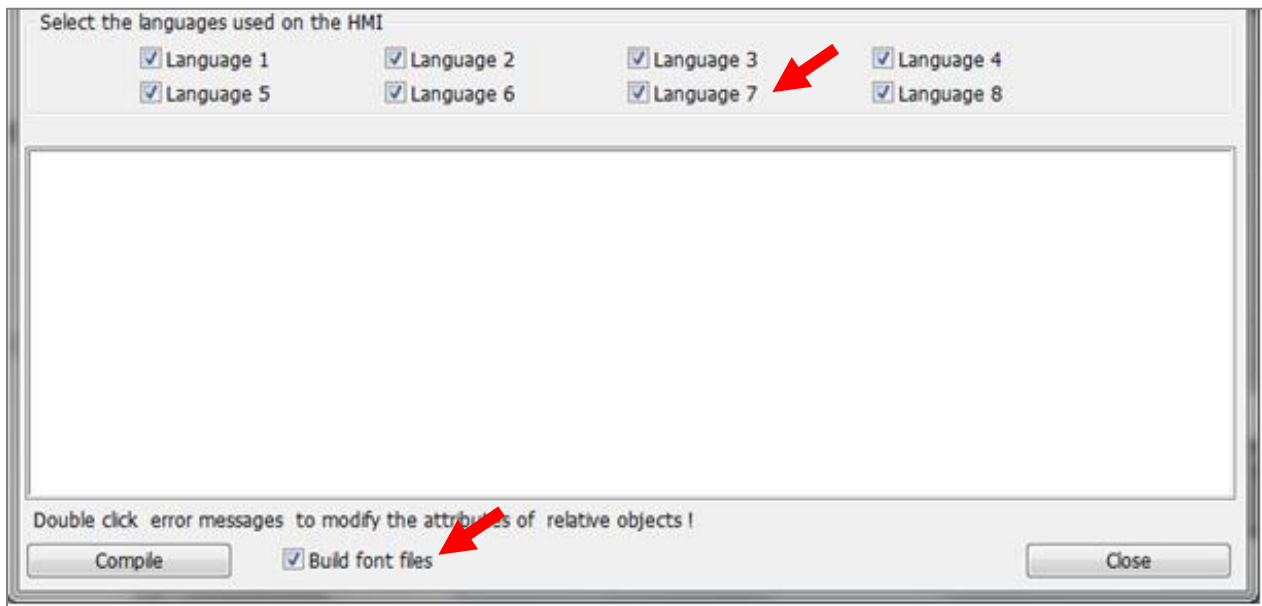
If the international characters do not display correctly on the HMI as seen below, try the following:



1. Select a Windows True Type font that contains the international characters you require.



2. When compiling your project, ensure 'Build font files' is selected and the required language boxes are checked.



3. Download your project to the HMI with the "Font files" check box checked in the download window.