

TECHNICAL NOTE

Maple Model(s)

Title

TN5120

cMT-SVR

Activate a OPC-UA license on a cMT-SVR

P/N: 0907-5120

Rev. 00 Date: 05/17/2017



Summary

To use the OPC UA Server feature on a cMT-SVR, you must purchase a license for every cMT-SVR that you plan to use. This is a one-time purchase that is valid for the life of the product.

After you have purchased an OPC UA license, you will receive an email from Maple Systems that contains the license serial number and activation code. You must activate the feature on the target cMT-SVR using EZwarePlus (v5.07.01.168 or later).

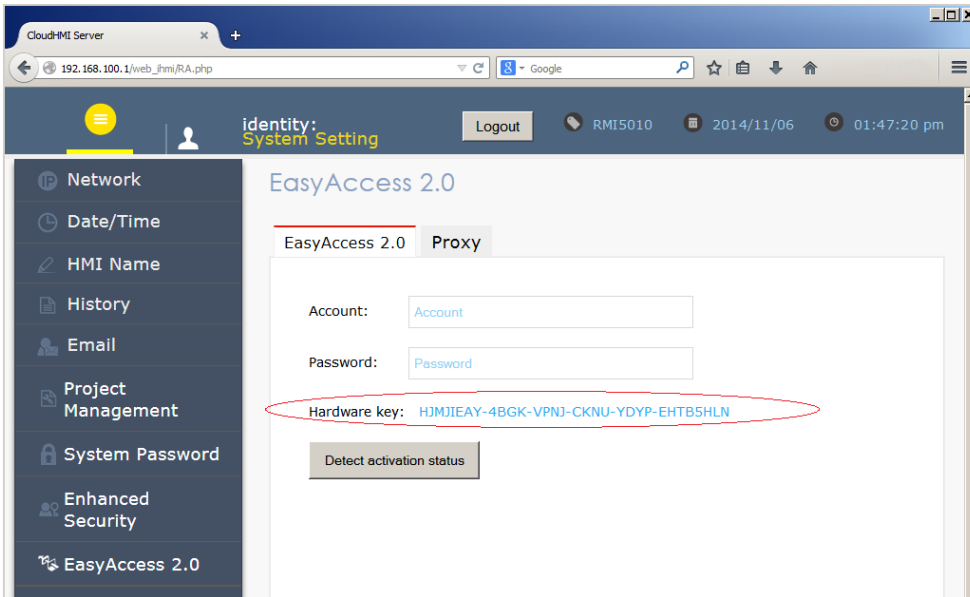
Solution

After you have purchased an OPC UA license, you will receive an email from Maple Systems that contains the license serial number and activation code. You must activate the feature on the target cMT-SVR using EZwarePlus, (v5.07.01.168 or later).

Steps to activate OPC UA Server license on a cMT-SVR:

1. Get the email you received from Maple Systems which contains the license serial number and activation code.
Example:
Product Name: cMT-SVR
License Serial: OPCAxxxxxx
Activation code: 1234-1234-1234-1234
2. Retrieve the Hardware key from the cMT-SVR. To do this, connect your cMT-SVR to your computer via Ethernet connection and start your web browser.
3. Type `http://<HMI IP Address>/` into the URL address bar. Note: default IP address on the Ethernet2 port is 192.168.100.1. For more information on how to configure the cMT-SVR, please consult the cMT Quick Start Guide (P/N 10101026).

4. The Hardware key is located on the EasyAccess 2.0 page:



5. Go to <https://account.ihmi.net/opcu/activate.php> to activate:

A screenshot of a web form titled 'Activate OPC UA Server(cMT-SVR)'. The form contains two input fields: 'Hardware Key:' and 'Activation Code:'. Below the input fields is a blue 'Activate' button.

6. Type in the Hardware Key and the Activation Code. Then click the **Activate** button.

Activate OPC UA Server(cMT-SVR)

Hardware Key:
AAAAAAAA-AAAA-AAAA-AAAA-AAAA-AAAAAAAA

Activation Code:
P6BK-QRMS-4TXT-3LCY

Activate

7. A confirmation window displays with the information above listed. If the information is accurate, click the **Yes, activate** button. Note: Once this step is completed, the activation cannot be undone.

Please confirm the information below.
Once the activation code is used, it cannot be undone

Hardware Key: AAAAAAAAA-AAAA-AAAA-AAAA-AAAA-AAAAAAAA

Activation Code: P6BK-QRMS-4TXT-3LCY

NO, go back Yes, activate

8. The cMT-SVR identified by the hardware key is now activated but to use the OPC UA feature on the cMT-SVR, you must now download the license key “opcua.lic” file to the cMT. Therefore, click the **Download License Key** button to save the opcua.lic file:

Successfully activated!
The license key for you HMI can be download below.

Hardware Key: AAAAAAAAA-AAAA-AAAA-AAAA-AAAA-AAAAAAAA

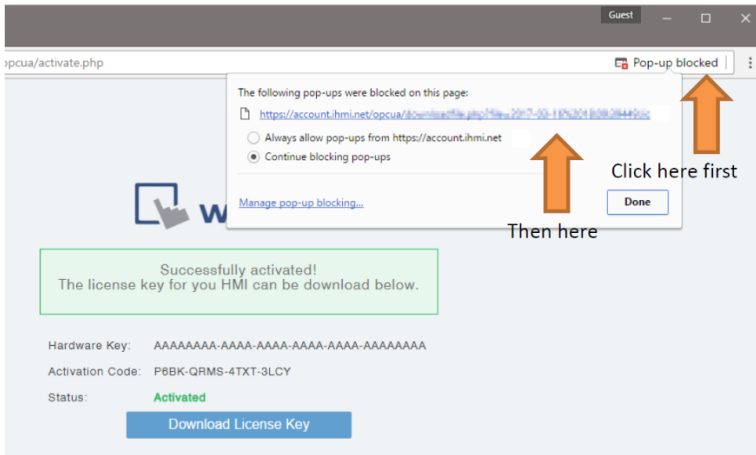
Activation Code: P6BK-QRMS-4TXT-3LCY

Status: **Activated**

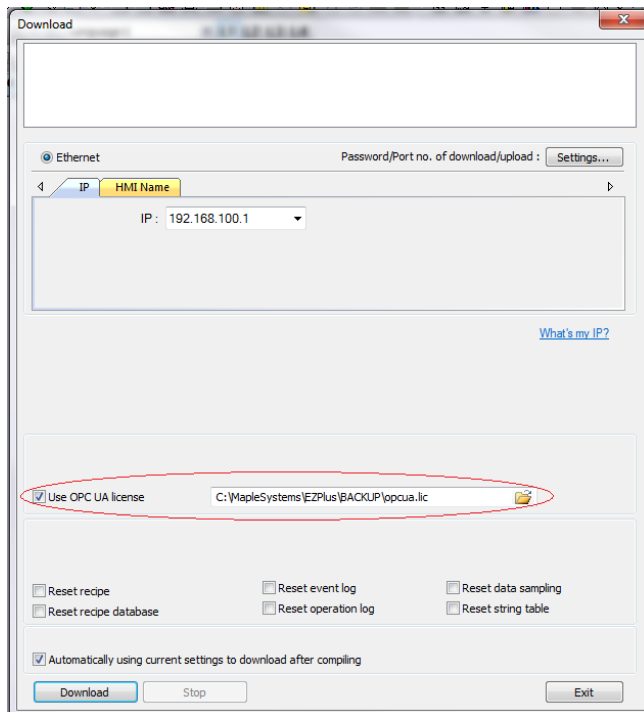
Download License Key

Note: The license key is non-transferrable and valid only for the cMT-SVR bearing this hardware key.

9. Your browser might block your download because of a new pop-up window. If so, follow the browser's instruction to allow 'account.ihmi.net' to show pop-ups, so that you can download this file. For example, if using Google Chrome, simply click the icon on the right of the URL address bar, and then click the blue link from the dialog:



10. Now you can transfer the opcu.lic license file to the cMT-SVR using EZwarePlus.
- Start EZwarePlus and open your cMT-SVR project.
 - Click **Tools->Download** to display the Download window.
 - Check the **Use OPC UA license** option and link to the opcu.lic file you downloaded:



Click the **Download** button.

Troubleshooting:

If you lose your opcua.lic file, you can go back to the activation website page (<https://account.ihmi.net/opcua/activate.php>) enter the hardware key and activation code, then download the license key again.

If you are experiencing difficulties getting the OPC UA Server to operate, the HMI may not be activated. You can verify by placing a Numeric Display object on one of your cMT-SVR project screens that is targeted to LW-11436. Then download the project to the cMT-SVR and read the value. If the value is 2, then the OPC UA Server feature is not activated. If so, verify that the license key file has the same hardware key as the cMT-SVR. Try downloading the license key file again. If the OS of the cMT-SVR has been updated, the license key file may need to be downloaded to the cMT again.

If you are still experiencing difficulties, please call us or send an email to support@maplesystems.com