

TECHNICAL NOTE

Maple Model(s)

cMT3000X

Title

WebView Quick Start

TN5137

P/N: 0907-5137

Rev. 00 Date: 01/7/2021



Summary

The WebView feature enables viewing and interacting with your HMI screens in a web browser. This technical note describes how to set it up.

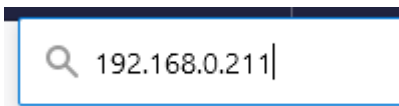
Solution

The WebView feature is supported on cMT X series Smart HMIs and Smart Servers. Contact a sales engineer for a current list of supported models.

Connecting to WebView:

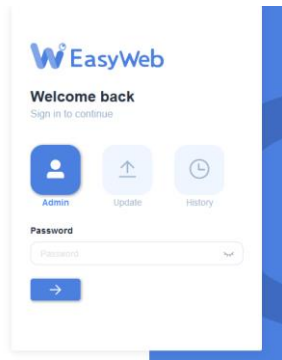
To connect to WebView all you need is a device that has a web browser and has access to the HMI's IP address. To find the HMI's IP address you can use the settings menu on the device, accessed by touching the icon in the upper left corner of the HMI. To connect to WebView:

1. Open your browser or open a new tab in your browser.
2. Enter the HMI's IP address in the browser's address bar:



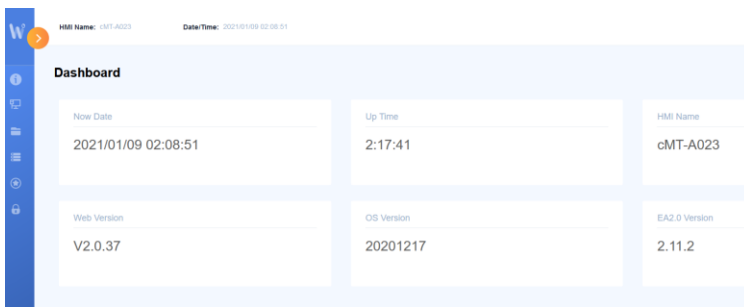
and press enter.


3. The HMI's EasyWeb 2.0 system dashboard login page should appear in your browser screen*. You will see a prompt for a password:

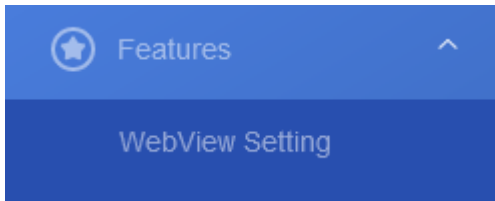


The default is: 111111. We highly recommend updating this password once you are logged in, this can be done in the *Account > System Password* section of the EasyWeb 2.0 system dashboard.

4. After logging in you will see the EasyWeb 2.0 system dashboard:



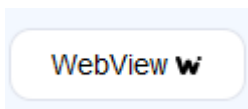
Click on the orange arrow icon  to expand the navigation options on the left edge of the screen. Expand the *Features* option and click on *WebView Setting*:



5. Toggle the enable button to the on position:



6. Click on the *WebView* button in the upper left of the screen:



The loading screen will appear:




After a short time, the active HMI screen will appear in the browser:



That's it, the browser now has complete access to the project as if you were standing in front of the HMI.

Exiting WebView

To get back to the EasyWeb 2.0 system dashboard click on the options icon  in the top right corner of the WebView screen, and click on the gear / settings icon:



Connecting Directly to the Project:

If you want to have WebView load automatically instead of going through the EasyWeb 2.0 system dashboard first, simply check the *set as homepage* checkbox on the *Features > WebView Setting* section of the EasyWeb 2.0 system dashboard:



If this box is checked, entering the HMI's IP address in a web browser will bring you directly to the WebView window and show the active HMI screen*.

Screen Navigation on a Smart Phone or Tablet


In cases where the HMI screen does not fit in the browser window a navigation tool is available in the bottom right (by default) of the browser window. This allows selecting a sub-section of the screen that is visible on the device. Simply drag the square around to select the section of the screen to view.



Viewing Top Left of HMI Screen



Viewing Bottom Right of HMI Screen

From the settings icon in the upper left of the WebView screen  there are options to:



Zoom so that the HMI screen fits in the browser window.



Reset the Zoom to 100%, matching the resolution of the HMI



Position the navigation tool in the bottom left of the window.



Position the navigation tool in the bottom right of the window.



Access the EasyWeb 2.0 system dashboard.



Log out of the HMI.

Passwords and Security:

The password set in the EasyWeb 2.0 system dashboard in the *WebView Setting* screen is used to log into the Webview screen (assuming the *password free* checkbox is not checked). This is the password a user would have to enter if they went directly to the WebView interface, by passing the EasyWeb 2.0 system dashboard. The security settings configured in the EasyBuilder Pro project still apply when navigating the project using WebView. Note that if a user is logged in on the HMI, that user will also be logged in when another user connects via WebView and will have the same security classes as the local user.

* Note on Self-Signed Certificate

When first logging in to WebView or EasyWeb 2.0 you may get a message warning that the website's certificate could not be verified. This is because the connection to the HMI's built-in webserver is encrypted using the https protocol, and a self-signed public key certificate. Most websites on the internet using https use a certificate signed by a Certificate Authority (CA). This is done because the clients do not know the identity of the website owner and require a third party to establish that the website

can be trusted. It is not practical for every HMI to have a CA signed certificate as there is a fee for this. This does not mean that the connection is not encrypted or secure.

For more information refer to this [help topic](#).